

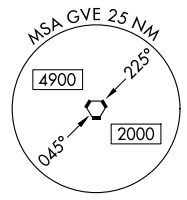
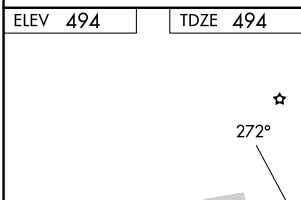
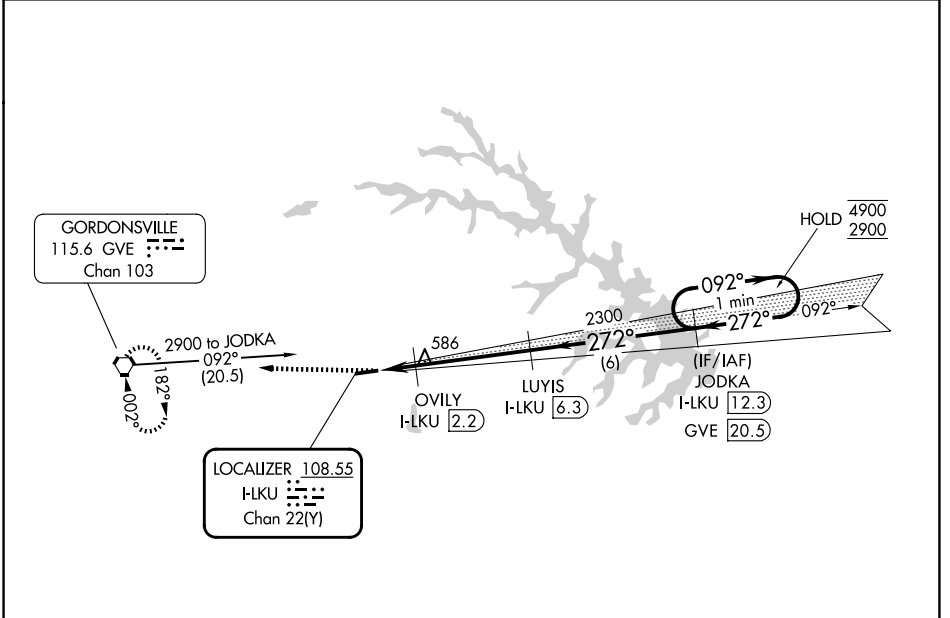
LOC/DME I-LKU 108.55 Chan 22 (Y)	APP CRS 272°	Rwy Ldg 4300 TDZE 494 Apt Elev 494
--	------------------------	---

LOC RWY 27

LOUISA COUNTY/FREEMAN FLD (LKU)

DME required.	MISSED APPROACH: Climb to 2900 direct GVE VORTAC and hold, continue climb-in-hold to 2900.
---------------	---

AWOS-3 119.475	POTOMAC APP CON 132.85 323.125	UNICOM 122.975 (CTAF) 0
--------------------------	--	--



2900 GVE I-LKU [0.8]	OVILY I-LKU [2.2]	LUYIS I-LKU [6.3]	JODKA I-LKU [12.3]	One Minute Holding Pattern	
				4900	2900
980 TCH 40 ≤ 3.00°		2300			
1.4 NM		4.1 NM	6 NM		
CATEGORY	A	B	C	D	
S-LOC 27	900-1	406 (500-1)	NA		
CIRCLING	920-1 426 (500-1)	960-1 466 (500-1)	NA		

REIL Rwy 9 and 27 **0**
MIRL Rwy 9-27 **0**

LOC RWY 27

NE-3, 11 JUN 2026 to 09 JUL 2026

NE-3, 11 JUN 2026 to 09 JUL 2026