

LOC/DME I-TDF <b>108.7</b> Chan 24	APP CRS <b>060°</b>	Rwy Idg TDZE Apt Elev <b>5702</b> <b>604</b> <b>609</b>
--	------------------------	--

# ILS or LOC RWY 6

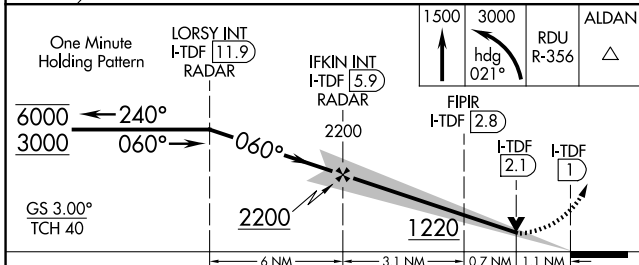
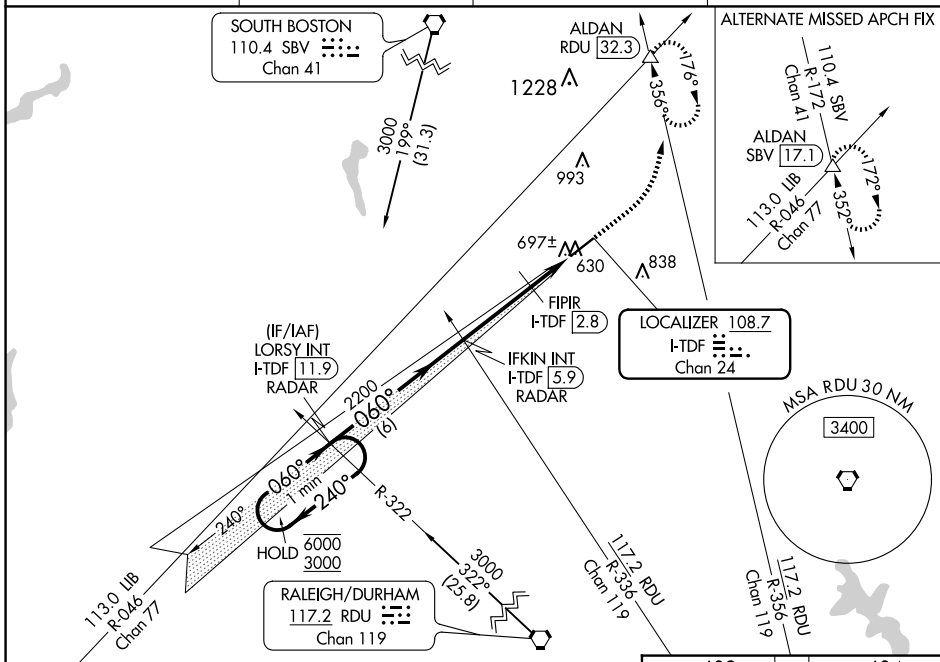
RALEIGH RGNL AT PERSON COUNTY (TDF)

**▼** For inop ALS, increase S-LOC 6 visibility Cats C/D to 1 3/4 SM and increase FIPR fix minimums  
**▲ NA** S-LOC 6 visibility Cats C/D to 1 SM.

**MALSR**

**MISSED APPROACH:** Climb to 1500 then climbing left turn to 3000 on heading 021° and on RDU VORTAC R-356 to ALDAN INT/RDU 32.3 DME and hold, continue climb-in-hold to 3000.

AWOS-3 <b>126.725</b>	RALEIGH APP CON <b>132.35 256.9</b>	GCO <b>119.7</b>	UNICOM <b>122.7 (CTAF) 0</b>
--------------------------	--	---------------------	---------------------------------



ELEV 609	TDZE 604
REIL Rwy 24 0	
MIRL Rwy 6-24 0	
FAF to MAP 4.9 NM	
Knots	60 90 120 150 180
Min:Sec	4:54 3:16 2:27 1:58 1:38

CATEGORY	A	B	C	D
S-ILS 6	804-1/2 200 (200-1/2)			
S-LOC 6	1220-1/2	616 (700-1/2)	1220-1 3/8	616 (700-1 3/8)
CIRCLING	1220-1	611 (700-1)	1300-2	1300-2 1/4
			691 (700-2)	691 (700-2 1/4)
FIPR FIX MINIMUMS				
S-LOC 6	980-1/2	376 (400-1/2)	980- 5/8	376 (400- 5/8)
CIRCLING	1080-1	471 (500-1)	1300-2	1300-2 1/4
			691 (700-2)	691 (700-2 1/4)

SE-2, 11 JUN 2026 to 09 JUL 2026

SE-2, 11 JUN 2026 to 09 JUL 2026