

WAAS CH <b>45516</b> <b>W18A</b>	APP CRS <b>182°</b>	Rwy Ldg TDZE Apt Elev	<b>3700</b> <b>72</b> <b>74</b>
--	------------------------	-----------------------------	---------------------------------------

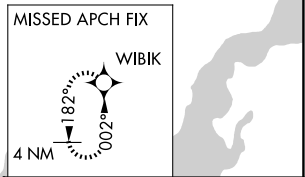
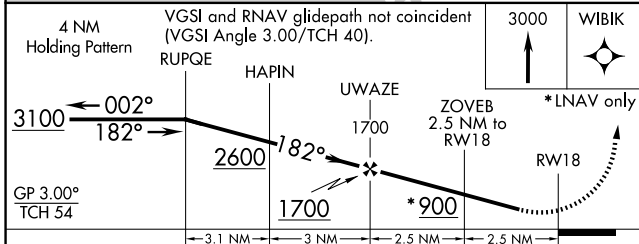
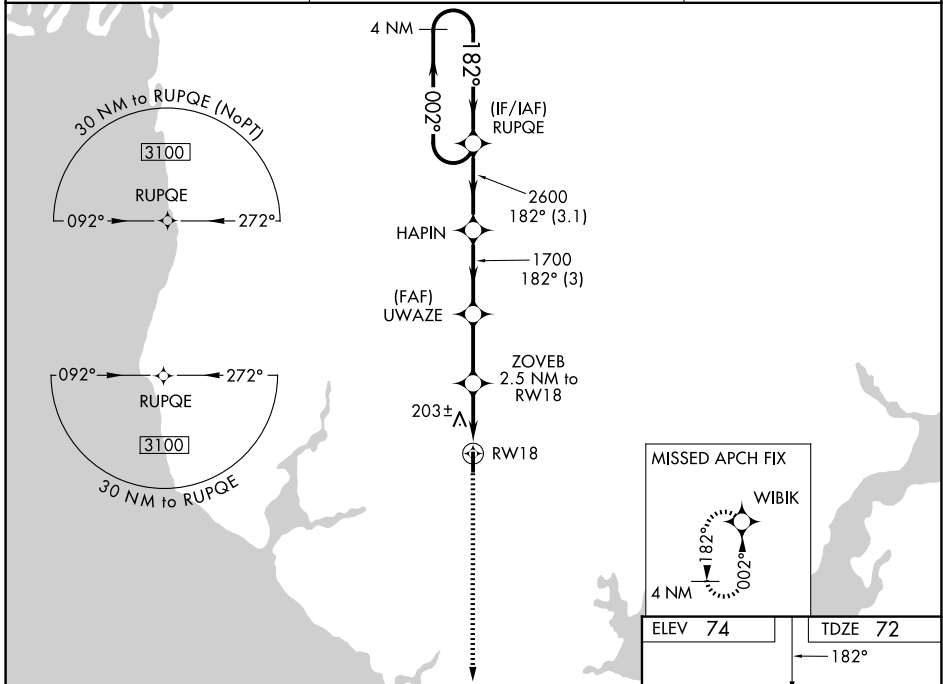
# RNAV (GPS) RWY 18

HOLK FLD AT FOLEY MUNI (5R4)

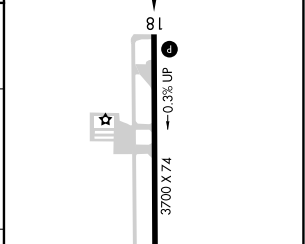
**▼** Baro-VNAV NA. DME/DME RNP-0.3 NA. Procedure NA at night. Helicopter visibility reduction below 1 SM NA. Use Fairhope altimeter setting. When not received, use Gulf Shores altimeter setting and increase LPV DA to 397 feet, LNAV/VNAV DA to 547 feet, and all MDA 20 feet; increase LNAV Cat C visibility 1/8 mile and Circling Cat C visibility 1/4 mile.

**▲ NA** MISSED APPROACH: Climb to 3000 direct WIBIK and hold, continue climb-in-hold to 3000.

CGF AWOS-3PT <b>118.425</b>	PENSACOLA APP CON <b>118.6 380.6</b>	UNICOM <b>123.05 (CTAF) 0</b>
--------------------------------	---	----------------------------------



ELEV 74	TDZE 72
---------	---------



CATEGORY	A	B	C	D
LPV DA	393-1	321 (400-1)		NA
LNAV/VNAV DA	543-1 1/8	471 (500-1 1/8)		NA
LNAV MDA	480-1	408 (500-1)	480-1 1/8 408 (500-1 1/8)	NA
CIRCLING	680-1	606 (700-1)	880-2 1/4 806 (900-2 1/4)	NA

MIRL Rwy 18-36 0

SE-4, 11 JUN 2026 to 09 JUL 2026

SE-4, 11 JUN 2026 to 09 JUL 2026