

WAAS CH 99344	APP CRS 013°	Rwy Ldg TDZE Apt Elev	5398 86 86
-------------------------	------------------------	-----------------------------	---------------------------------------

RNAV (GPS) RWY 1

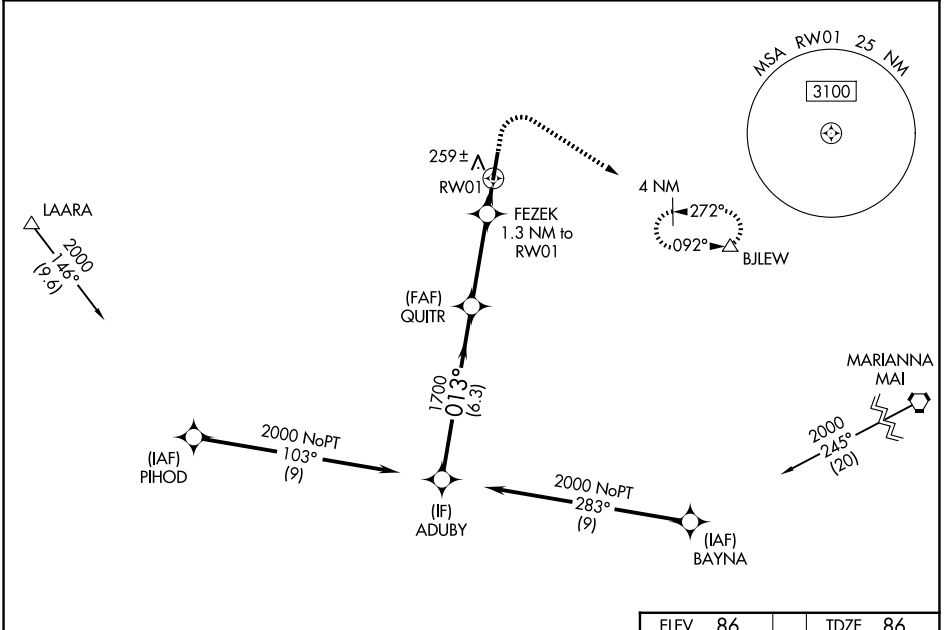
TRI-COUNTY (BCR)

RNP APCH - GPS.

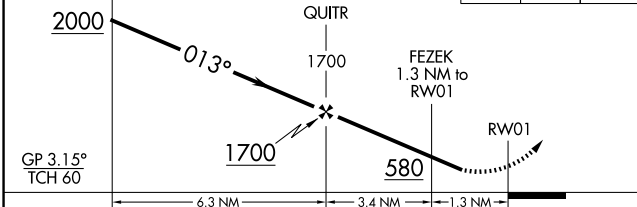
⚠ Helicopter visibility reduction below $\frac{3}{4}$ SM NA. Baro-VNAV NA when using Marianna altimeter setting. Circling Rwy 19 NA at night. When local altimeter setting not received, use Marianna altimeter setting: increase LPV DA to 468 and LNAV/VNAV DA to 573 and all visibilities $\frac{1}{8}$ SM; increase all MDAs 60 feet and visibility Cat C $\frac{1}{4}$ SM.

MISSED APPROACH: Climb to 700 then climbing right turn to 2000 direct BJLEW and hold.

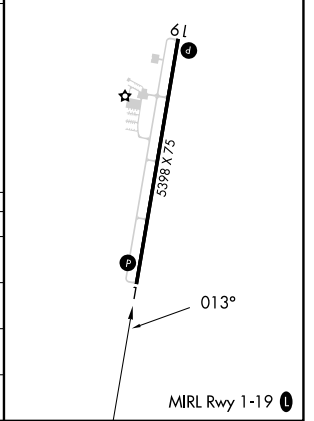
ASOS 119.825	CAIRNS APP CON ★ 133.75 270.35	UNICOM 122.725 (CTAF) 0
------------------------	--	-----------------------------------



ELEV	86	TDZE	86
------	----	------	----



CATEGORY	A	B	C	D
LPV DA	415-1	329 (400-1)		NA
LNAV/VNAV DA	520-1¼	434 (500-1¼)		NA
LNAV MDA	520-1	434 (500-1)	520-1¼ 434 (500-1¼)	NA
CIRCLING	580-1 494 (500-1)	600-1 514 (600-1)	680-1½ 594 (600-1½)	NA



SE-3, 11 JUN 2026 to 09 JUL 2026

SE-3, 11 JUN 2026 to 09 JUL 2026