

WAAS CH <b>53608</b> <b>W17A</b>	APP CRS <b>173°</b>	Rwy Idg TDZE Apt Elev	<b>4605</b> <b>1827</b> <b>1827</b>
----------------------------------------	------------------------	-----------------------------	-------------------------------------------

# RNAV (GPS) RWY 17

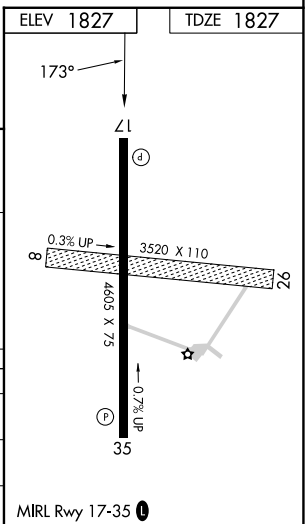
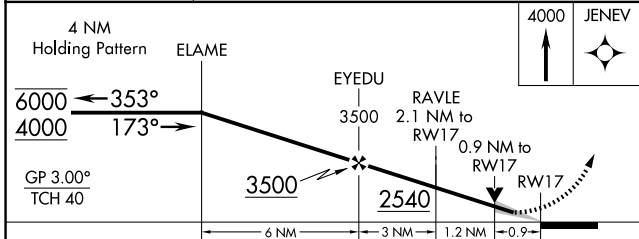
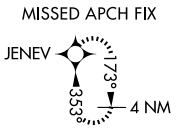
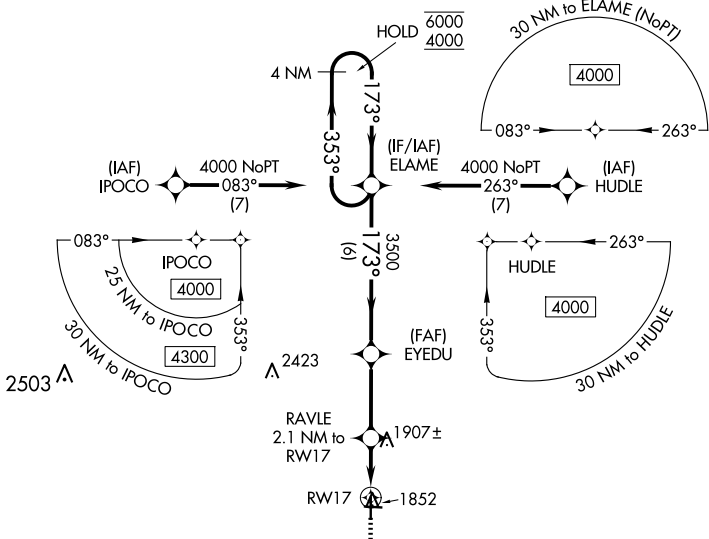
CURTIS FLD (BBD)

RNP APCH - GPS.

▼ For uncompensated Baro-VNAV systems, LNAV/VNAV NA below -18°C or above 54°C.  
 ▲ Baro-VNAV and VDP NA when using JCT altimeter setting. When local altimeter setting not received, use JCT altimeter setting: increase LPV DA to 2144 feet; increase LNAV/VNAV DA to 2194 feet; increase all MDAs 120 feet and LNAV visibility Cat C 3/8 SM.

MISSED APPROACH: Climb to 4000 direct JENEV and hold.

AWOS-3 <b>118.375</b>	HOUSTON CENTER <b>132.35 317.5</b>	UNICOM <b>122.8 (CTAF) 0</b>
--------------------------	---------------------------------------	---------------------------------



CATEGORY	A	B	C	D
LPV DA	2027-1	200 (200-1)		NA
LNAV/VNAV DA	2077-1	250 (300-1)		NA
LNAV MDA	2160-1	333 (400-1)		NA

SC-3, 11 JUN 2026 to 09 JUL 2026

SC-3, 11 JUN 2026 to 09 JUL 2026