

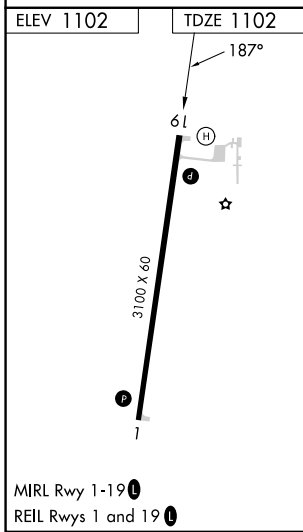
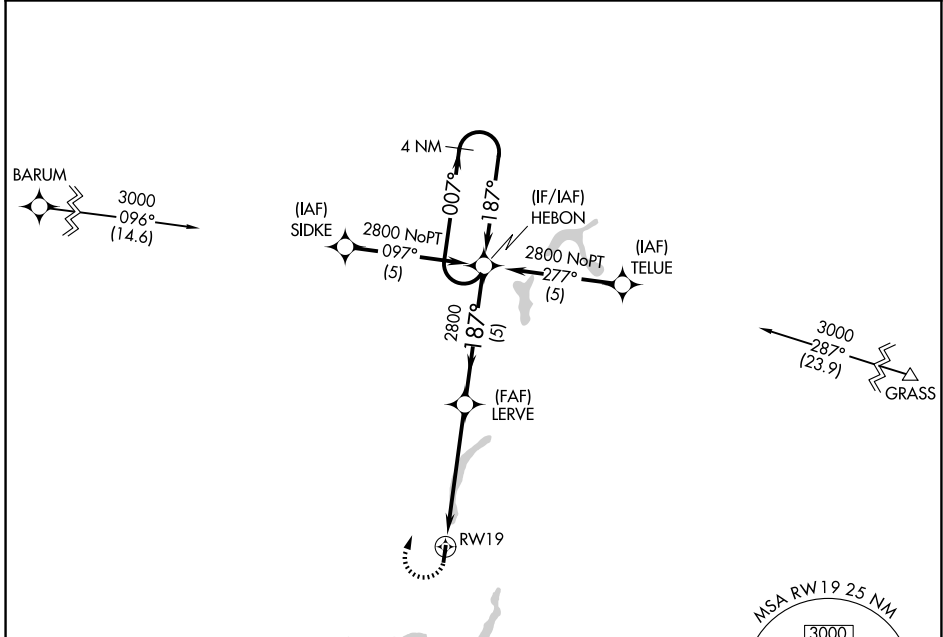
APP CRS	Rwy Ldg	3100
187°	TDZE	1102
	Apt Elev	1102

RNAV (GPS) RWY 19

SOLON SPRINGS MUNI (OLG)

RNP APCH.	MISSED APPROACH: Climbing right turn to 2800 direct HEBON WP and hold.
<p>▼ Straight-in Rwy 19 NA at night, Circling Rwy 19 NA at night. Rwy 19 helicopter visibility reduction below 1 SM NA.</p>	

AWOS-3 119.6	DULUTH APP CON 125.45 233.7	CTAF 122.9 0
------------------------	---------------------------------------	------------------------



ELEV 1102		TDZE 1102	
2800		HEBON	
Visual Segment - Obstacles.		4 NM Holding Pattern	
CATEGORY	A	B	C
LNAV MDA	1800-1	698 (700-1)	1800-2 698 (700-2)
CIRCLING	1800-1	698 (700-1)	1800-2 698 (700-2)

EC-3, 11 JUN 2026 to 09 JUL 2026

EC-3, 11 JUN 2026 to 09 JUL 2026