

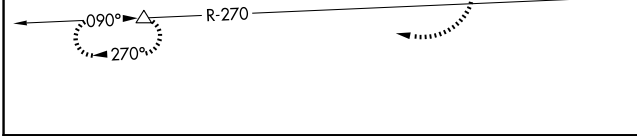
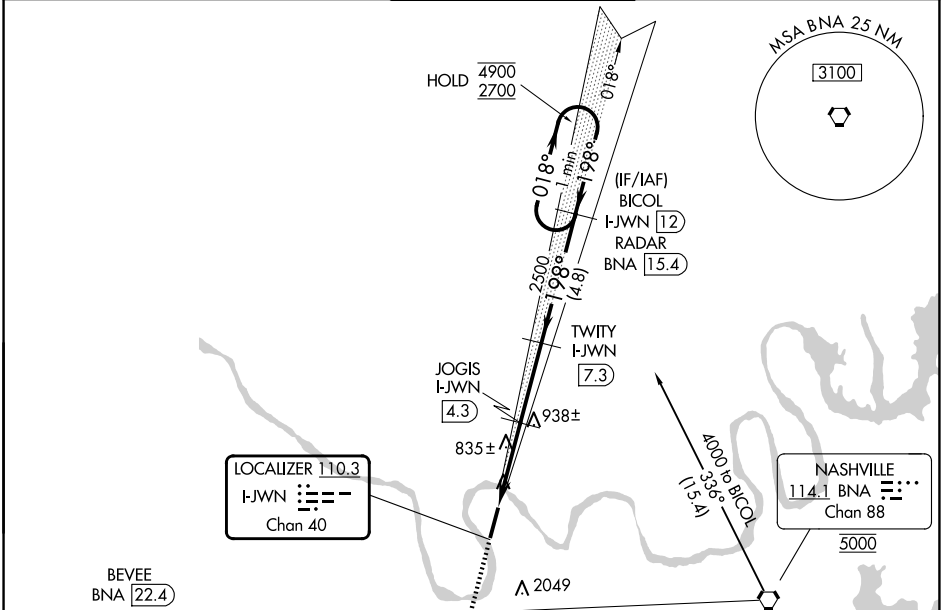
LOC/DME I-JWN <b>110.3</b> Chan 40	APP CRS <b>198°</b>	Rwy Ldg TDZE Apt Elev	<b>6001</b> <b>501</b> <b>501</b>
--	------------------------	-----------------------------	---

# ILS or LOC RWY 20

JOHN C TUNE (JWN)

DME required.	<p>▼ Circling NA east of Rwy 2-20. VDP NA when using Nashville Intl altimeter setting.</p> <p>▲ NA When local altimeter setting not received, use Nashville Intl altimeter setting and increase S-ILS 20 DA to 738 feet, increase all MDAs 40 feet.</p>	<p>MISSED APPROACH: Climb to 2200 then climbing right turn to 3000 on BNA VORTAC R-270 to BEVEE/BNA 22.4 DME and hold.</p>
---------------	---	--

ATIS <b>127.075</b>	NASHVILLE APP CON <b>119.35 372.0</b>	JOHN TUNE TOWER ★ <b>119.45 (CTAF)</b>	GND CON <b>121.7</b>	UNICOM <b>122.7</b>
------------------------	--	---	-------------------------	------------------------



ELEV 501	D	TDZE 501
----------	---	----------

Diagram details: 198°, 20, 6001 x 100, TWR, 0.7% UP, 2.

CATEGORY	A	B	C	D
S-ILS 20	701-3/4 200 (200-3/4)			
S-LOC 20	1100-1	599 (600-1)	1100-1 3/4	599 (600-1 3/4)
CIRCLING	1200-1	699 (700-1)	1340-2 1/2 839 (900-2 1/2)	1340-2 3/4 839 (900-2 3/4)

MIRL Rwy 2-20  
REIL Rws 2 and 20

SE-1, 11 JUN 2026 to 09 JUL 2026

SE-1, 11 JUN 2026 to 09 JUL 2026