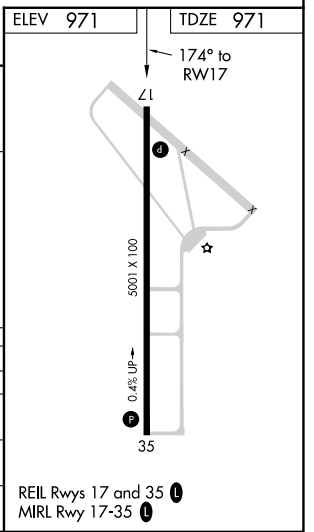
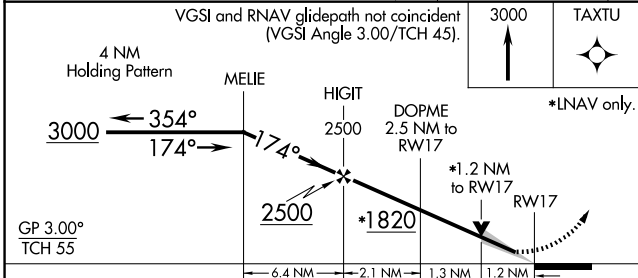
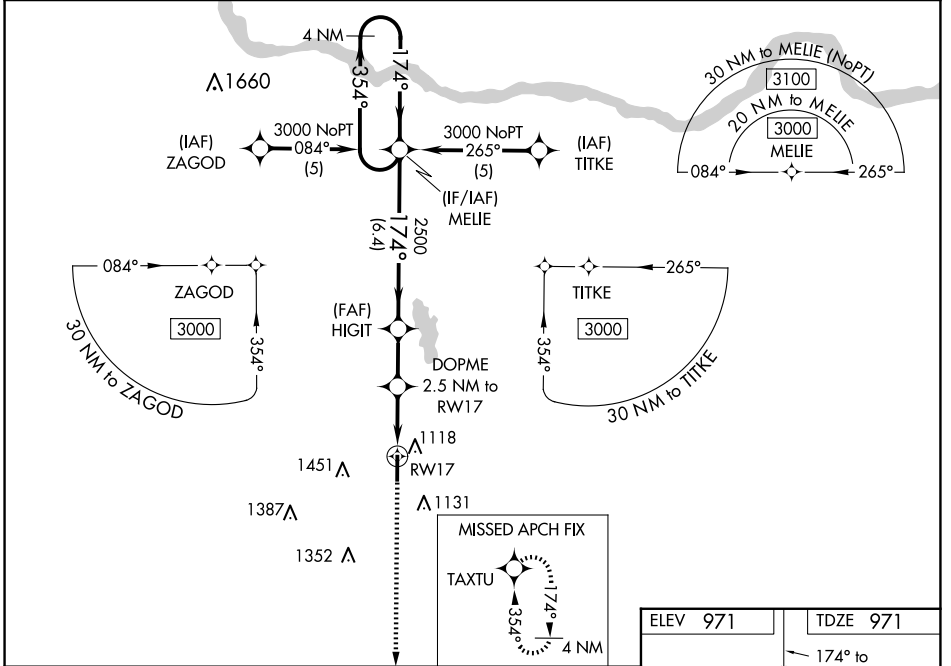


WAAS CH 86718 W17A	APP CRS 174°	Rwy Idg 5001 TDZE 971 Apt Elev 971
--	------------------------	---

RNAV (GPS) RWY 17

PAULS VALLEY MUNI (PVJ)

RNP APCH.		MISSED APPROACH: Climb to 3000 direct TAXTU and hold.
AWOS-3 118.675	FORT WORTH CENTER 124.75 323.0	UNICOM 122.8 (CTAF) 0



GP 3.00° TCH 55	MELIE	HIGIT	DOPME	RWY 17
	2500	2500	2.5 NM to RWY 17	
		*1820	*1.2 NM to RWY 17	
	6.4 NM	2.1 NM	1.3 NM	1.2 NM
CATEGORY	A	B	C	D
LPV DA		1171-1	200 (200-1)	
LNAV/VNAV DA		1413-1½	442 (500-1½)	
LNAV MDA	1420-1	449 (500-1)	1420-1¼ 449 (500-1¼)	1420-1¾ 449 (500-1¾)
CIRCLING	1440-1	469 (500-1)	1540-1½ 569 (600-1½)	1760-2 789 (800-2)

REIL Rwy 17 and 35 0
MIRL Rwy 17-35 0

SC-1, 11 JUN 2026 to 09 JUL 2026

SC-1, 11 JUN 2026 to 09 JUL 2026