

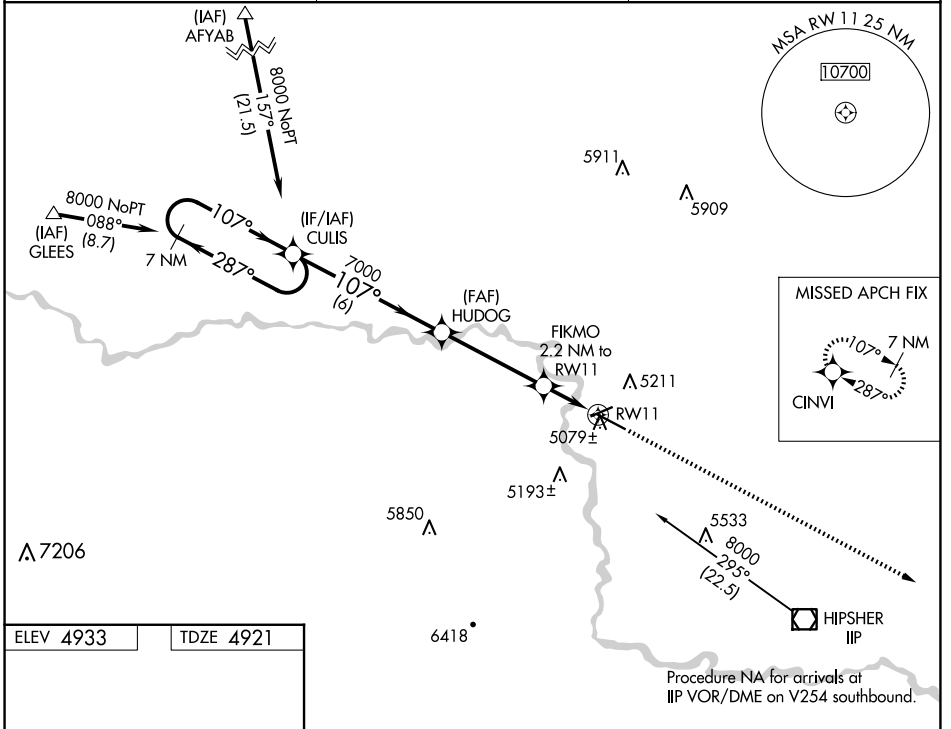
WAAS CH 58018 W11A	APP CRS 107°	Rwy Idg TDZE Apt Elev 6534 4921 4933
--	------------------------	--

RNAV (GPS) RWY 11

CONVERSE COUNTY (DGW)

RNP APCH.	MISSED APPROACH: Climb to 8000 direct CINVI and hold.
<p>For uncompensated Baro-VNAV systems, LNAV/VNAV NA below -24°C (-11°F) or above 39°C (102°F).</p>	

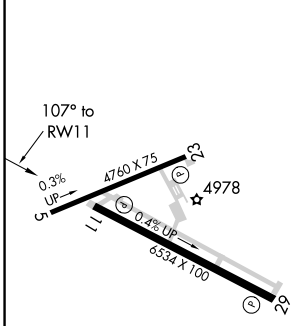
ASOS 135.225	DENVER CENTER 135.6 363.025	UNICOM 122.8 (CTAF) 0
------------------------	---------------------------------------	---------------------------------



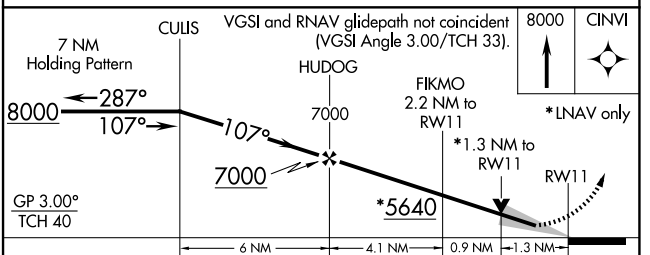
NW-1, 11 JUN 2026 to 09 JUL 2026

NW-1, 11 JUN 2026 to 09 JUL 2026

ELEV 4933	TDZE 4921
-----------	-----------



REIL Rwy 11 and 29 0	MIRL Rwy 11-29 and 5-23 0
----------------------	---------------------------



CATEGORY	A	B	C	D
LPV DA		5121-3/4	200 (200-3/4)	
LNAV/VNAV DA		5329-1 1/2	408 (400-1 1/2)	
LNAV MDA		5340-1 419 (500-1)	5340-1 1/4 419 (500-1 1/4)	