

WAAS CH 86937 W18A	APP CRS 183°	Rwy Ldg TDZE Apt Elev	5999 654 654
----------------------------------------	------------------------	-----------------------------	-----------------------------------------

RNAV (GPS) RWY 18

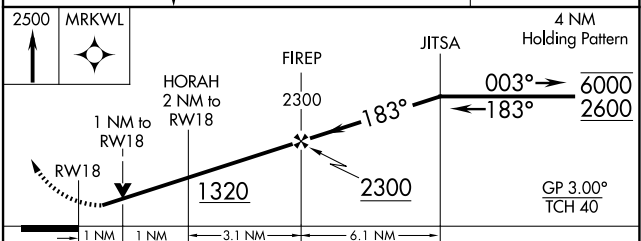
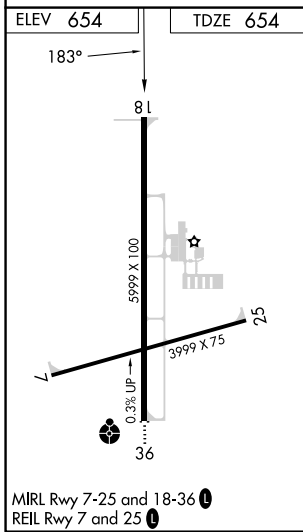
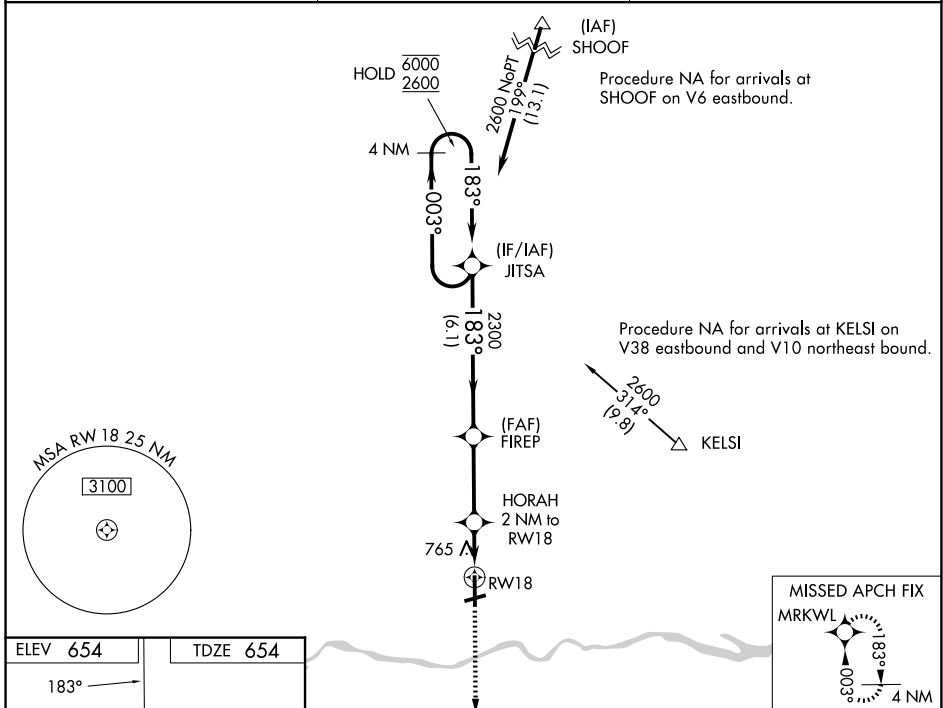
ILLINOIS VALLEY RGNL-WALTER A DUNCAN FLD (VYS)

RNP APCH - GPS.

▼ Rwy 18 helicopter visibility reduction below ¼ SM NA.
▲ For uncompensated Baro-VNAV systems, LNAV/VNAV NA below -16°C or above 54°C.

MISSED APPROACH: Climb to 2500 direct MRKWL and hold.

AWOS-3 120.025	CHICAGO CENTER 123.75 259.1	UNICOM 123.0 (CTAF) 0
--------------------------	---------------------------------------	---------------------------------



CATEGORY	A	B	C	D
LPV DA		939-1	285 (300-1)	
LNAV/VNAV DA		926-1	272 (300-1)	
LNAV MDA		1020-1	366 (400-1)	
CIRCLING	1120-1 466 (500-1)	1240-1 586 (600-1)	1260-1¾ 606 (700-1¾)	1460-2½ 806 (900-2½)

RNAV (GPS) RWY 18

EC-3, 11 JUN 2026 to 09 JUL 2026

EC-3, 11 JUN 2026 to 09 JUL 2026