

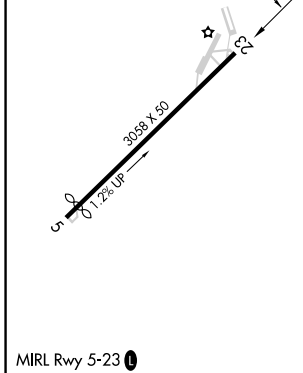
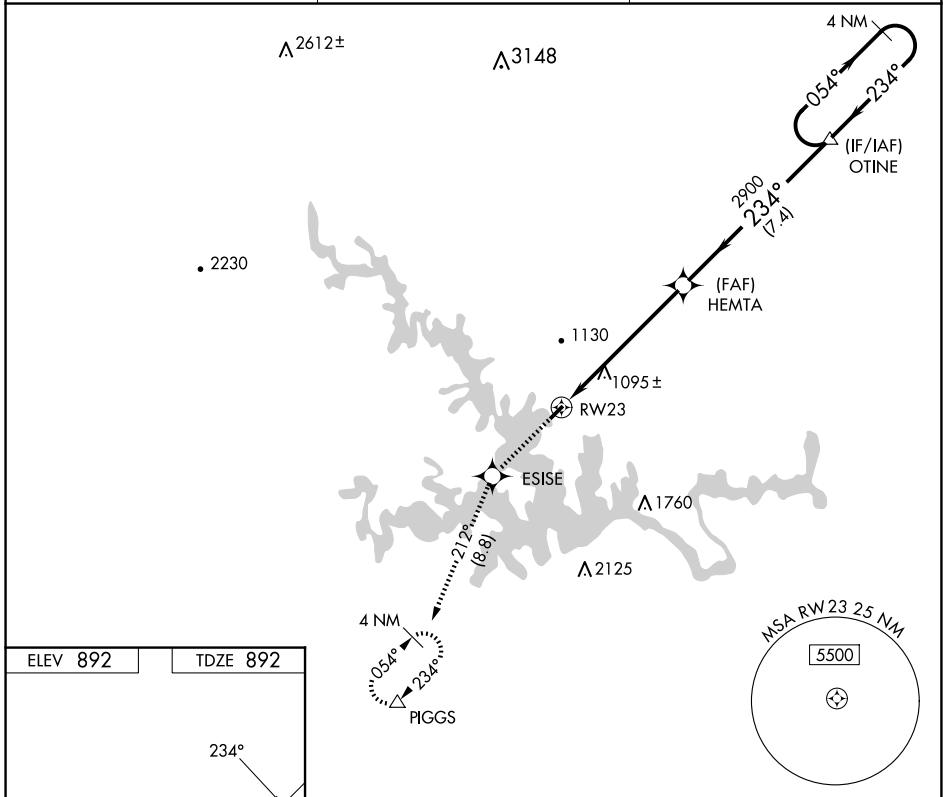
APP CRS 234°	Rwy Idg 3058
	TDZE 892
	Apt Elev 892

RNAV (GPS) RWY 23

SMITH MOUNTAIN LAKE (W91)

<p>▽ NA</p> <p>DME/DME RNP-0.3 NA. Use Lynchburg altimeter setting; when not received, use Roanoke altimeter setting and increase all MDA 40 feet. Procedure NA at night. Helicopter visibility reduction below 1 SM NA.</p>	<p>MISSED APPROACH: Climb to 4000 direct ESISE and on track 212° to PIGGS and hold.</p>
---	---

LYH ASOS 119.8	ROANOKE APP CON 135.0 254.325	UNICOM 122.975 (CTAF) 0
--------------------------	---	-----------------------------------



ELEV 892	TDZE 892			4000	ESISE	tr 212°	PIGGS	Visual Segment - Obstacles.	4 NM Holding Pattern
								OTINE	
								HEMTA	
								RWY 23	
								2900	
								6.2 NM	
								7.4 NM	
CATEGORY	A	B	C	D					
LNAV MDA	1900-3	1008 (1100-3)	NA						
CIRCLING	1900-3	1008 (1100-3)	NA						

NE-3, 11 JUN 2026 to 09 JUL 2026

NE-3, 11 JUN 2026 to 09 JUL 2026