

APP CRS 185°	Rwy Idg 4220
	TDZE 339
	Apt Elev 345

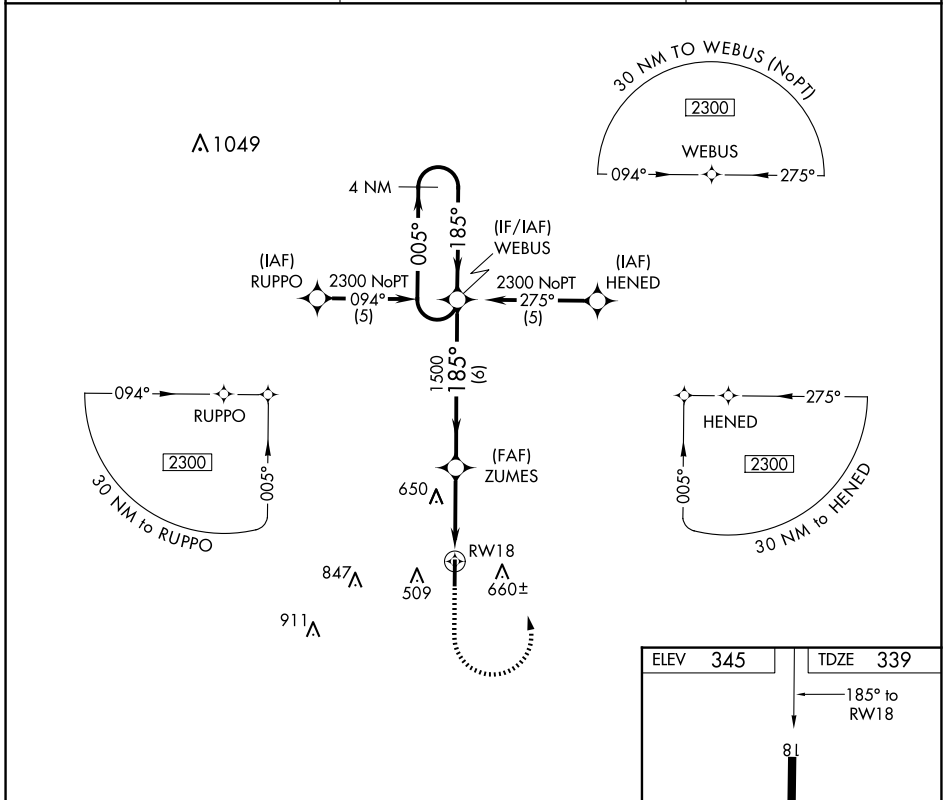
RNAV (GPS) RWY 18

DR C P SAVAGE SR (53A)

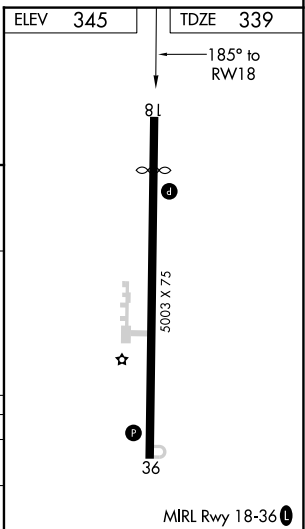
NA DME/DME RNP-0.3 NA. Procedure NA at night. Helicopter visibility reduction below 1 SM NA. Use Americus altimeter setting, when not received use Macon altimeter setting and increase all MDA 20 feet.

MISSED APPROACH: Climb to 1500 then climbing left turn to 2300 direct WEBUS and hold.

ACJ AWOS-3 128.375	ATLANTA APP CON * 124.2 279.6	CTAF 122.9
------------------------------	---	----------------------



VGSI and descent angles not coincident (VGSI Angle 3.30/TCH 35).			
4 NM Holding Pattern	WEBUS	ZUMES	RW18
2300	1500	1500	
005°	185°	185°	
185°	3.03° TCH 45		
6 NM	3.5 NM		
CATEGORY	A	B	C
LNVA MDA	1020-1	681 (700-1)	1020-2 681 (700-2)
CIRCLING	1020-1	675 (700-1)	1120-2¼ 775 (800-2¼)



SE-4, 11 JUN 2026 to 09 JUL 2026

SE-4, 11 JUN 2026 to 09 JUL 2026