

LOC I-AEG <b>110.1</b>	APP CRS <b>215°</b>	Rwy Ldg TDZE Apt Elev	<b>7398</b> <b>5817</b> <b>5837</b>
---------------------------	------------------------	-----------------------------	---

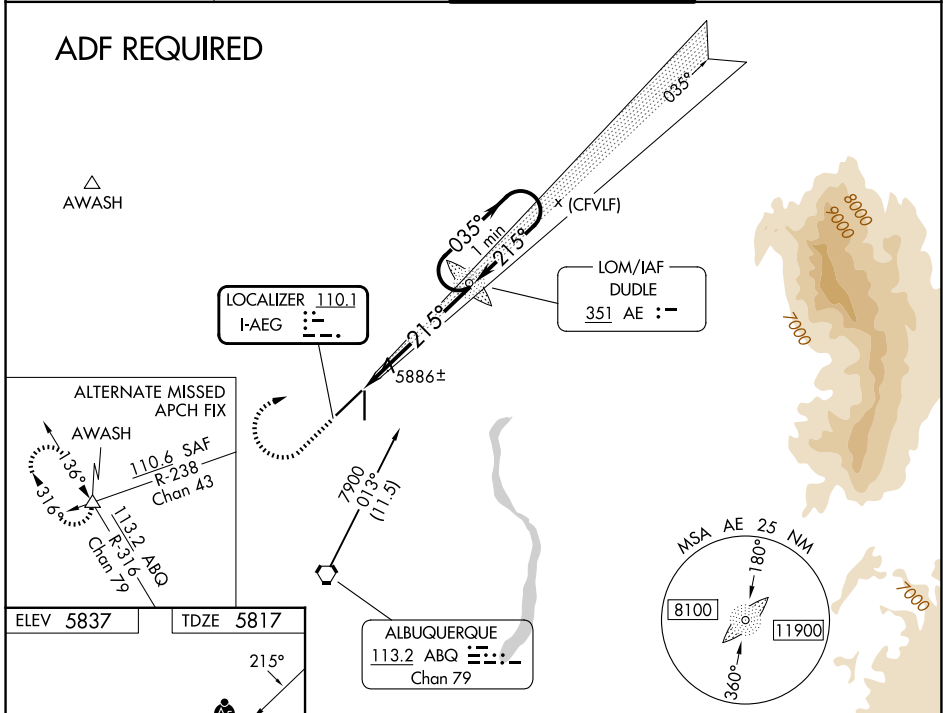
# ILS or LOC RWY 22

## DOUBLE EAGLE II (A/E/G)

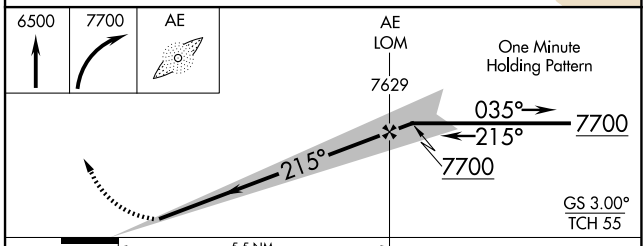
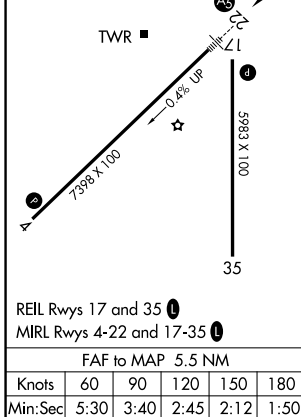
<p><b>NA</b> When local altimeter setting not received, use Albuquerque Intl Suport altimeter setting and increase all DA 94 feet, increase all MDA 100 feet, and increase visibility S-LOC 22 Cats C/D ¼ mile, Circling Cats C/D ½ mile. For inop MALSR when using Albuquerque Intl Suport altimeter setting, increase visibility S-ILS 22 all Cats ⅜ mile.</p>	<p><b>MALSR</b></p>	<p><b>MISSED APPROACH:</b> Climb to 6500 then climbing right turn 7700 direct DUDLE LOM and hold.</p>
--	---------------------	---

<p>ATIS <b>119.025</b></p>	<p>ALBUQUERQUE APP CON <b>127.4 253.5</b></p>	<p><b>DOUBLE EAGLE II TOWER *</b> <b>120.15 (CTAF) 0</b></p>	<p>GND CON <b>121.625</b></p>
--------------------------------	---	--	-----------------------------------

### ADF REQUIRED



ELEV 5837	TDZE 5817
-----------	-----------



CATEGORY	A	B	C	D
S-ILS 22	6017-½ 200 (200-½)			
S-LOC 22	6140-½ 323 (400-½)			
CIRCLING	6400-1	563 (600-1)	6420-1½ 583 (600-1½)	6640-2½ 803 (900-2½)

SW-1, 11 JUN 2026 to 09 JUL 2026

SW-1, 11 JUN 2026 to 09 JUL 2026