

LOC/DME I-EVW <b>108.9</b> Chan 26	APP CRS <b>234°</b>	Rwy Ldg TDZE Apt Elev	<b>7300</b> <b>7143</b> <b>7143</b>
--	------------------------	-----------------------------	---

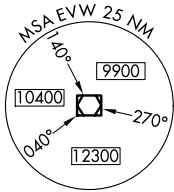
**ILS or LOC/DME RWY 23**  
EVANSTON-UINTA COUNTY BURNS FLD (E V W)

**⚠** For inoperative MALS, increase S-LOC 23 Cat D visibility to 1 mile. When local altimeter setting not received, procedure NA.

**MALS** MISSED APPROACH: Climb to 7600 then climbing left turn to 12000 via EVW VOR/DME R-213 to COOL/ EVW VOR/DME 16.6 DME and hold, continue climb-in-hold to 12000.

ASOS <b>120.0</b>	SALT LAKE CENTER <b>127.7 354.125</b>	GCO <b>121.72</b>	UNICOM <b>123.0 (CTAF)</b>
----------------------	--	----------------------	-------------------------------

Procedure NA for arrivals at FBR VOR/DME via airway radials 213 CW 285.



**LOCALIZER 108.9**  
I-EVW  
Chan 26

JADUR  
I-EVW [3.1]

CESLA  
I-EVW [7.3]

EVANSTON  
109.6 EVW  
Chan 33

IAF  
FORT BRIDGER  
114.45 FBR  
Chan 91(Y)

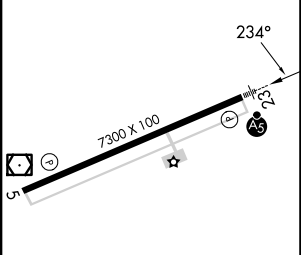
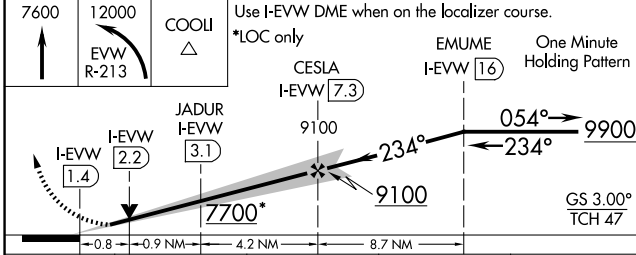
PACKY  
EVW [11.1]

COOL  
EVW [16.6]

NW-1, 11 JUN 2026 to 09 JUL 2026

NW-1, 11 JUN 2026 to 09 JUL 2026

ELEV 7143	TDZE 7143
-----------	-----------



CATEGORY	A	B	C	D
S-ILS 23	7343-1/2		200 (200-1/2)	
S-LOC 23	7440-1/2		297 (300-1/2)	
CIRCLING	7680-1 537 (600-1)	7760-1 617 (700-1)	7800-1 3/4 657 (700-1 3/4)	8000-2 3/4 857 (900-2 3/4)

REIL Rwy 5  
HIRL Rwy 5-23