

WAAS CH <b>86333</b> <b>W09A</b>	APP CRS <b>095°</b>	Rwy Ldg TDZE Apt Elev	<b>5200</b> <b>4086</b> <b>4094</b>
--	------------------------	-----------------------------	---

# RNAV (GPS) RWY 9

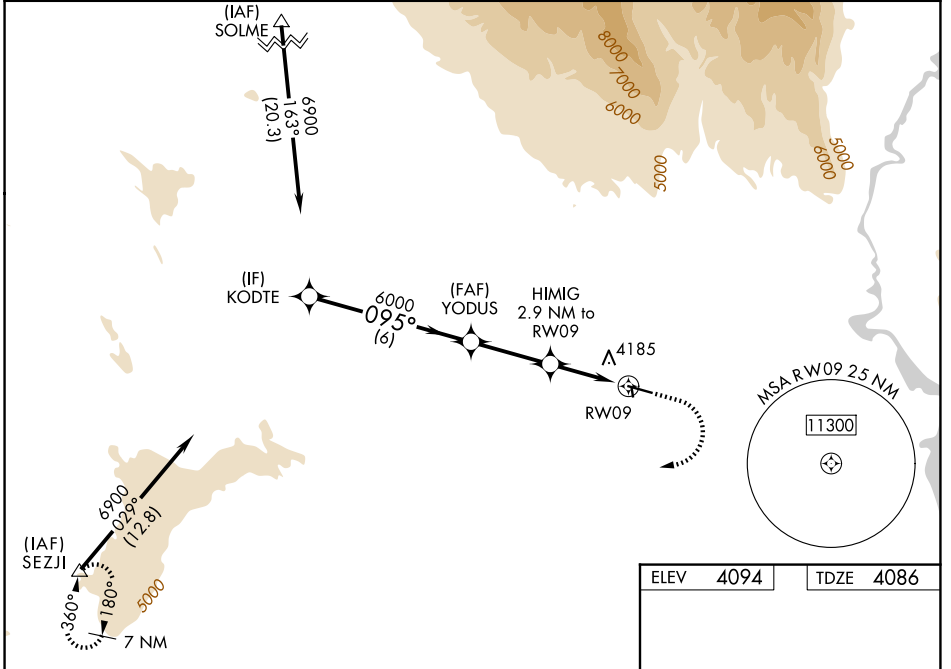
NORTH BIG HORN COUNTY (U68)

**RNP APCH - GPS**

Baro-VNAV NA when using Greybull altimeter setting. For uncompensated Baro-VNAV systems, LNAV/VNAV NA below -23°C or above 49°C. When Rwy 9 VGSI inop, Straight-in and Circling minimums NA at night. Helicopter visibility reduction below 1 SM NA. When local altimeter setting not received, use Greybull altimeter setting and increase all DA 87 feet and all LPV and LNAV/VNAV visibility 1/8 mile, increase all MDA 100 feet and LNAV Cats C/D visibility 3/8 mile and increase Circling Cat C visibility 1/4 mile. Circling NA to Rwy 16 and 34.

**MISSED APPROACH:** Climb to 4600 then climbing right turn to 8500 direct SEZJI and hold.

AWOS-3 <b>119.925</b>	SALT LAKE CENTER <b>133.25 285.6</b>	UNICOM <b>123.0 (CTAF)</b>
--------------------------	---	-------------------------------



NW-1, 11 JUN 2026 to 09 JUL 2026

NW-1, 11 JUN 2026 to 09 JUL 2026

ELEV 4094		TDZE 4086	
VGSI and RNAV glidepath not coincident (VGSI Angle 3.00/TCH 40). KODTE (6900) — 095° — YODUS (6000) — 095° — HIMIG (2.9 NM to RWY 9) — 095° — RWY 9 * 5060 * LNAV only.			
GP 3.00° TCH 55	4600	8500	SEZJI
CATEGORY   A   B   C   D			
LPV DA	4336-1		250 (300-1)
LNAV/VNAV DA	4344-1		258 (300-1)
LNAV MDA	4440-1		354 (400-1)
CIRCLING	4520-1 426 (500-1)	4680-1 586 (600-1)	4940-2 1/2 846 (900-2 1/2)
REIL Rwy 9 and 27 MRL Rwy 9-27			