

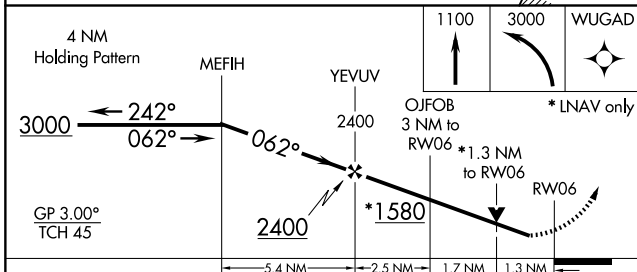
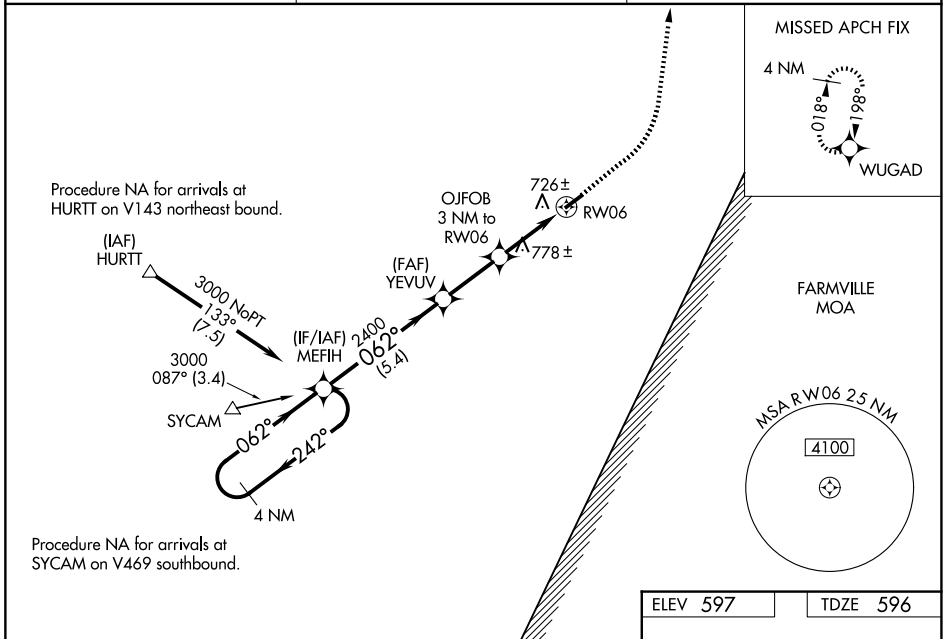
|  |                        |                             |   |
|--|------------------------|-----------------------------|---|
| WAAS<br>CH <b>82333</b><br><b>W06A</b> | APP CRS<br><b>062°</b> | Rwy Ldg<br>TDZE<br>Apt Elev | <b>3798</b><br><b>596</b><br><b>597</b> |
|--|------------------------|-----------------------------|---|

**RNAV (GPS) RWY 6**  
BROOKNEAL/CAMPBELL COUNTY (ØV4)

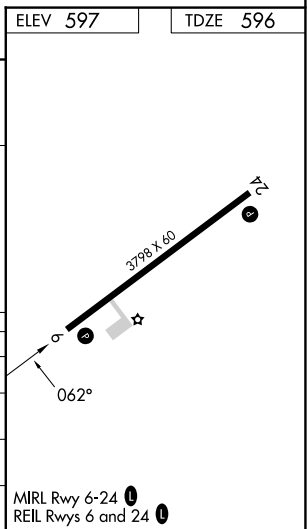
**⚠** For uncompensated Baro-VNAV systems, LNAV/VNAV NA below -16°C (3°F) or above 54°C (130°F). DME/DME RNP-0.3 NA. When local altimeter setting not received, use Lynchburg Rgnl/Preston Glenn Fld altimeter setting and increase all DA 81 feet and all MDA 100 feet, increase LPV all Cats visibility 1/8 mile, and increase LNAV/VNAV all Cats visibility 1/4 mile. Rwy 6 helicopter visibility reduction below 3/4 SM NA. Baro VNAV and VDP NA when using Lynchburg Rgnl/Preston Glenn Fld altimeter setting.

**MISSED APPROACH:** Climb to 1100 then climbing left turn to 3000 direct WUGAD and hold.

|                          |   |                                 |
|--------------------------|---|---------------------------------|
| AWOS-3<br><b>120,575</b> | ROANOKE APP CON<br><b>135,0 254,325</b> | UNICOM<br><b>122.7 (CTAF) Ø</b> |
|--------------------------|---|---------------------------------|



| CATEGORY     | A                     | B                     | C | D  |
|--------------|-----------------------|-----------------------|---|----|
| LPV DA       | 868-1                 | 272 (300-1)           |   | NA |
| LNAV/VNAV DA | 1031-1½               | 435 (500-1½)          |   | NA |
| LNAV MDA     | 1040-1                | 444 (500-1)           |   | NA |
| CIRCLING     | 1120-1<br>523 (600-1) | 1180-1<br>583 (600-1) |   | NA |



NE-3, 11 JUN 2026 to 09 JUL 2026

NE-3, 11 JUN 2026 to 09 JUL 2026