

APP CRS Rwy Ldg **3205**
008° TDZE **283**
 Apt Elev **287**

RNAV (GPS) RWY 1

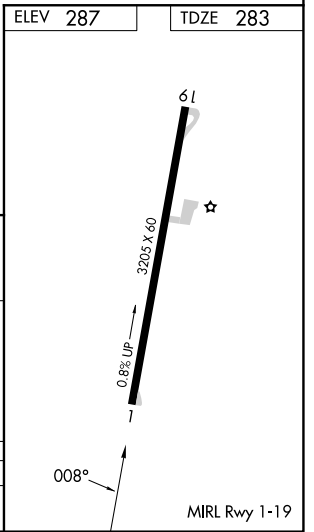
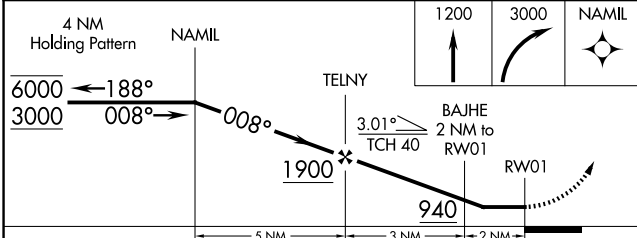
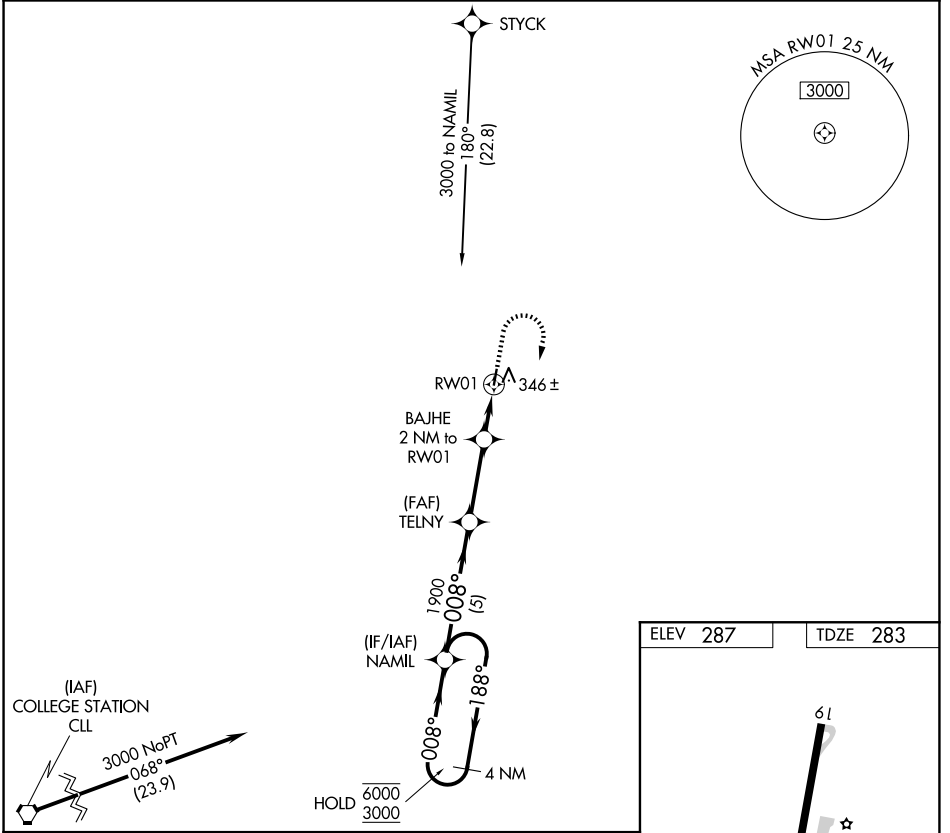
MADISONVILLE MUNI (51R)

RNP APCH - GPS.

▼ Procedure NA at night.
 ▲ NA Rwy 1 helicopter visibility reduction below 1 SM NA.
 Use UTS altimeter setting.

MISSED APPROACH: Climb to 1200 then climbing right turn to 3000 direct NAMIL and hold.

UTS ASOS **119.425** HOUSTON CENTER **134.8 269.6** CTAF **122.9**



CATEGORY	A	B	C	D
LNAV MDA	680-1	397 (400-1)	NA	

SC-5, 11 JUN 2026 to 09 JUL 2026

SC-5, 11 JUN 2026 to 09 JUL 2026