

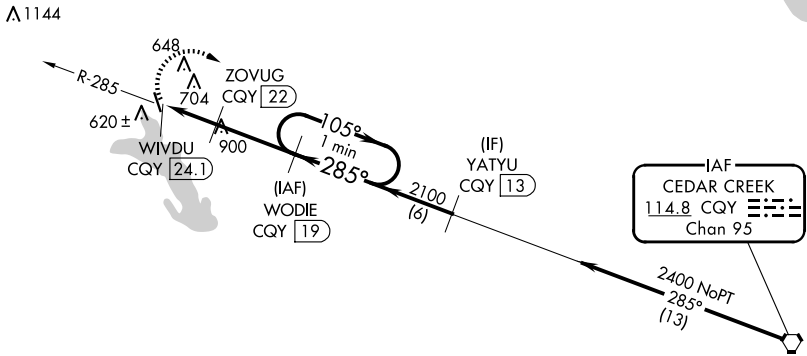
VORTAC CQY <b>114.8</b> Chan <b>95</b>	APP CRS <b>285°</b>	Rwy Idg TDZE Apt Elev <b>N/A</b> <b>N/A</b> <b>500</b>
--	------------------------	--

**VOR/DME-A**  
ENNIS MUNI (F41)

**NA** When local altimeter setting not received, use Midlothian/Waxahachie altimeter setting and increase all MDAs 40 feet and visibility Cat C ¼ SM.

**MISSED APPROACH:** Climbing right turn to 2400 on CQY R-285 to WODIE/19 DME and hold.

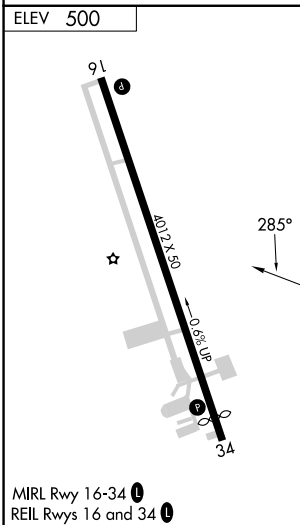
LNC AWOS-3PT <b>118.975</b>	LONE STAR APP CON <b>125.2 343.65</b>	CTAF <b>122.9</b>
--------------------------------	--	----------------------



Procedure NA for arrival at CQY VORTAC airway radials 234 CW 263.

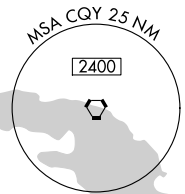
SC-2, 11 JUN 2026 to 09 JUL 2026

SC-2, 11 JUN 2026 to 09 JUL 2026



MIRL Rwy 16-34  
REIL Rwys 16 and 34

△1156



CATEGORY	A	B	C	D
	1200-1 700 (700-1)	1200-1¼ 700 (700-1¼)	1300-2¼ 800 (800-2¼)	NA

2400	WODIE CQY 19	WODIE CQY 19	One Minute Holding Pattern
2400	ZOVUG CQY 22	2400	105°
2100	2100	2100	285°
1420	1420	2100	285°
2.1	3 NM		