

LOC/DME I-JKA 110.7 Chan 44	APP CRS 270°	Rwy Ldg TDZE Apt Elev	6500 17 17
-------------------------------------------------	------------------------	-----------------------------	---------------------------------------

ILS or LOC RWY 27

GULF SHORES INTL/JACK EDWARDS FLD (JKA)

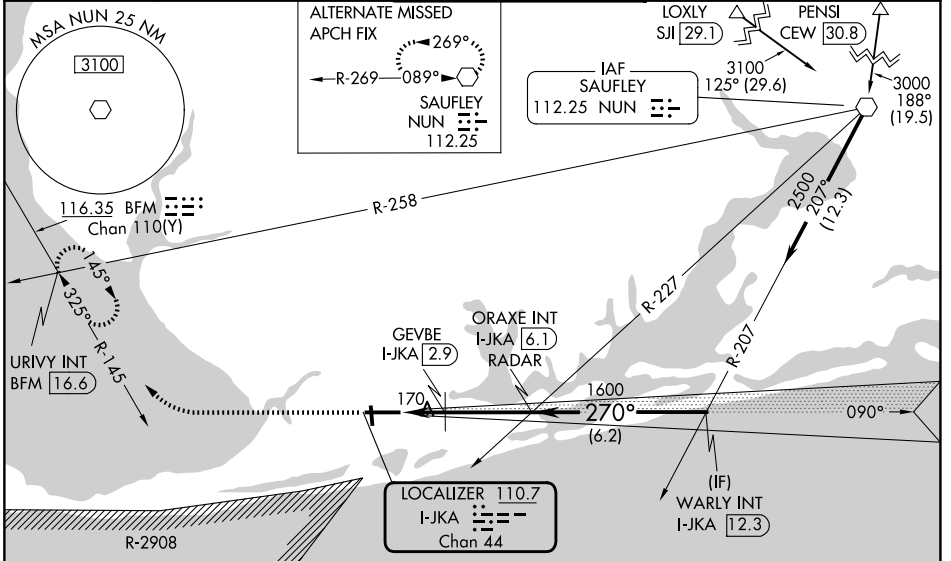
⚠ Circling Rwy 17, 35 NA at night. VDP NA with Pensacola Intl altimeter setting. When local altimeter setting not received, use Pensacola Intl altimeter setting and increase DA to 295 feet; increase all MDAs 80 feet; increase S-LOC 27 visibility Cats C and D $\frac{1}{2}$ SM; increase S-LOC 27 GEVBE FIX minimums visibility Cats C and D visibility $\frac{1}{4}$ SM; increase all Circling visibility Cat C and D to $\frac{1}{2}$ SM. GEVBE FIX MINIMUMS: For inop ALS, increase S-LOC 27 visibility Cats C and D to $\frac{1}{2}$ SM. PENSACOLA INTL ALTIMETER SETTING MINIMUMS: For inop ALS, increase S-ILS 27 visibility all Cats to $\frac{3}{4}$, increase S-LOC 27 visibility Cats C and D to $\frac{1}{2}$ SM; increase GEVBE FIX minimums S-LOC 27 visibility Cats C and D to $\frac{1}{2}$ SM.

MALSR



MISSED APPROACH:
Climb to 2000 on heading 270° and BFM VORTAC R-145 to URIVY INT/BFM 16.6 DME and hold.

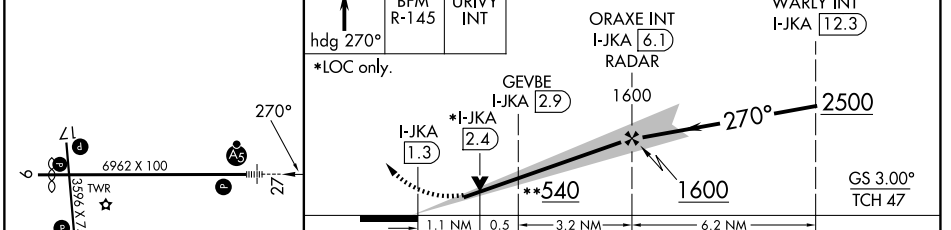
ATIS 134.525	PENSACOLA APP CON 120.65 270.8	GULF SHORES TOWER * 118.65 (CTAF)	GND CON 121.7	UNICOM 122.7
------------------------	------------------------------------------	---------------------------------------------	-------------------------	------------------------



SE-4, 11 JUN 2026 to 09 JUL 2026

SE-4, 11 JUN 2026 to 09 JUL 2026

ELEV 17	D	TDZE 17	2000	BFM R-145	URIVY INT	** 620 when using Pensacola Intl altimeter setting.
---------	----------	---------	------	-----------	-----------	-----------------------------------------------------



CATEGORY	A	B	C	D
S-ILS 27		217- $\frac{1}{2}$	200 (200- $\frac{1}{2}$)	
S-LOC 27	540- $\frac{1}{2}$	523 (600- $\frac{1}{2}$)	540-1	523 (600-1)
CIRCLING	540-1	523 (600-1)	740-2 723 (800-2)	740-2 $\frac{1}{4}$ 723 (800-2 $\frac{1}{4}$)
GEVBE FIX MINIMUMS				
S-LOC 27	420- $\frac{1}{2}$	403 (500- $\frac{1}{2}$)	420- $\frac{3}{4}$	403 (500- $\frac{3}{4}$)
CIRCLING	480-1	463 (500-1)	740-2 723 (800-2)	740-2 $\frac{1}{4}$ 723 (800-2 $\frac{1}{4}$)

MIRL Rwy 17-35 **Ⓛ**
HIRL Rwy 9-27 **Ⓛ**

FAF to MAP 4.8 NM

Knots	60	90	120	150	180
Min:Sec	4:48	3:12	2:24	1:55	1:36