

APP CRS	Rwy Idg	2880
356°	TDZE	96
	Apt Elev	96

RNAV (GPS) RWY 36

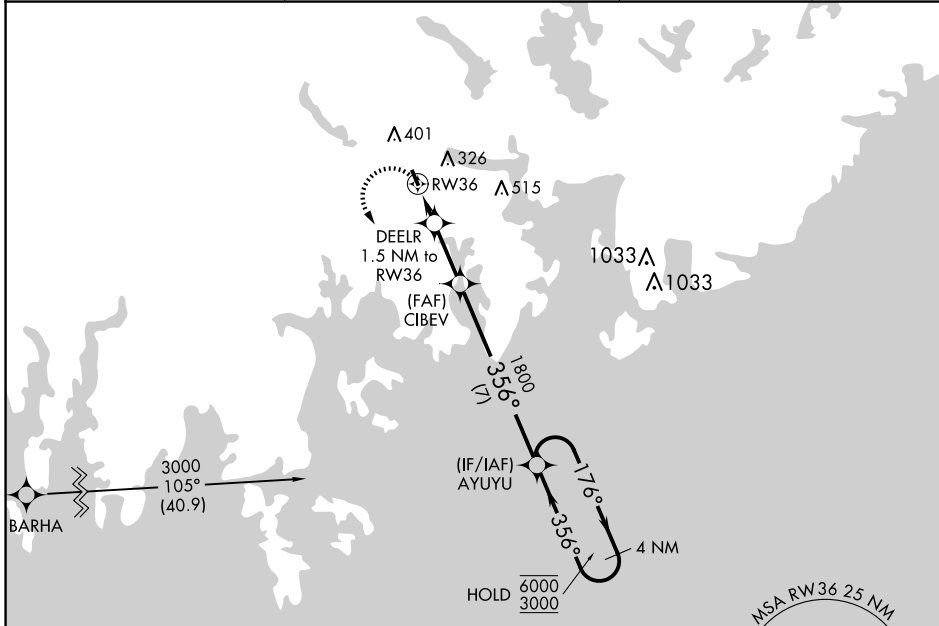
MACHIAS VALLEY (MVM)

RNP APCH - GPS.

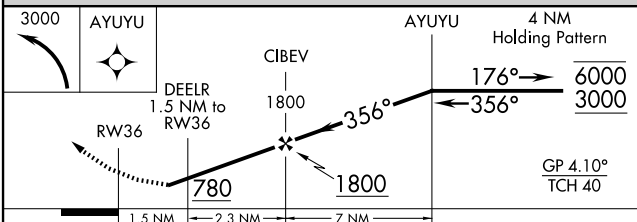
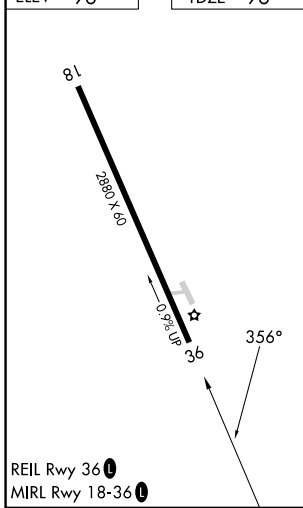
NA For uncompensated Baro-VNAV systems, LNAV/VNAV NA below -15°C or above 54°C. Helicopter visibility reduction below 1 SM NA. Procedure NA at night. Baro-VNAV NA when using BHB altimeter setting. When local altimeter setting not received, use BHB altimeter setting and increase LNAV/VNAV DA to 774 feet and all visibilities 1/8 SM. Increase all MDAs 100 feet.

MISSED APPROACH: Climbing left turn to 3000 direct AYUYU and hold, continue climb-in-hold to 3000.

AWOS-AV 122.8	BOSTON CENTER 124.25 290.5	UNICOM 122.8 (CTAF)
-------------------------	--------------------------------------	-------------------------------



ELEV	96	TDZE	96
------	----	------	----



CATEGORY	A	B	C	D
LNAV/VNAV DA	678-13/4	582 (600-13/4)		NA
LNAV MDA	580-1	484 (500-1)		NA
CIRCLING	700-1 604 (700-1)	760-1 664 (700-1)		NA

NE-1, 11 JUN 2026 to 09 JUL 2026

NE-1, 11 JUN 2026 to 09 JUL 2026