

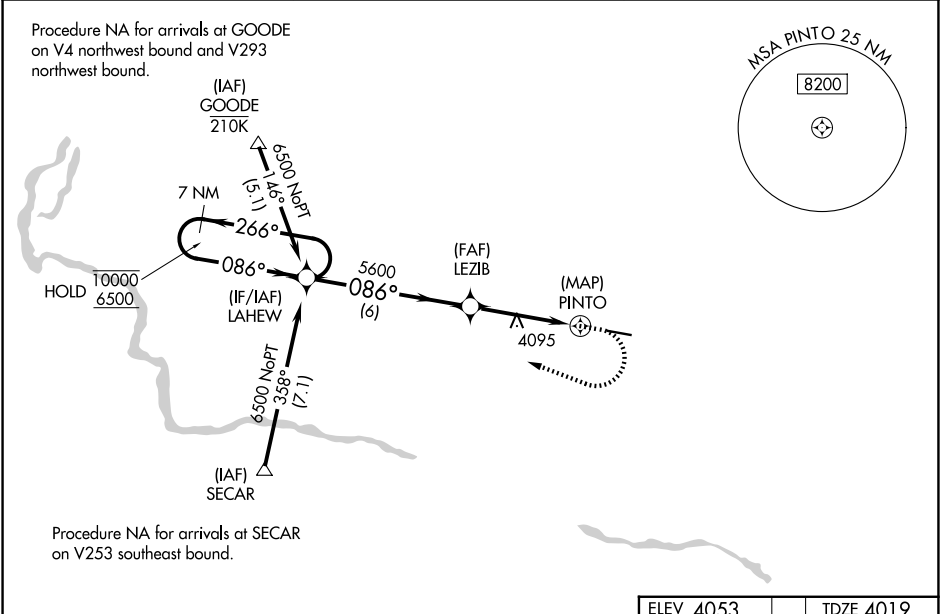
WAAS CH 90144 W09A	APP CRS 086°	Rwy Ldg TDZE Apt Elev	5002 4019 4053
--	------------------------	-----------------------------	---

RNAV (GPS) RWY 9

JEROME COUNTY (JER)

RNP APCH.	MISSED APPROACH: (Do not exceed 185K until LAHEW) Climb to 4900 then climbing right turn to 6500 direct LAHEW and hold. # Missed approach requires minimum climb of 300 feet per NM to 5200.
<p>For uncompensated Baro-VNAV systems, LNAV/VNAV NA below -16°C or above 54°C. Circling NA north of Rwy 9-27.</p>	

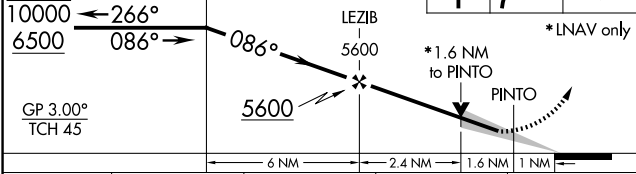
ASOS 135.225	TWIN FALLS APP CON★ 126.7 353.75	UNICOM 122.8 (CTAF) 0
------------------------	--	---------------------------------



NW-1, 11 JUN 2026 to 09 JUL 2026

NW-1, 11 JUN 2026 to 09 JUL 2026

ELEV 4053	TDZE 4019
7 NM Holding Pattern	VGSI and RNAV glidepath not coincident (VGSI Angle 3.00/TCH 40).
4900	6500 LAHEW



CATEGORY	A	B	C	D
LPV DA #		4544-1½	525 (500-1½)	
LPV DA		4624-1¾	605 (600-1¾)	
LNAV/VNAV DA		4674-1⅞	655 (700-1⅞)	
LNAV MDA	4820-1 801 (800-1)	4820-1¼ 801 (800-1¼)	4820-2½	801 (800-2½)
CIRCLING	4820-1 767 (800-1)	4820-1¼ 767 (800-1¼)	4820-2½	767 (800-2½)

