

|  |                        |                             |   |
|--|------------------------|-----------------------------|---|
| WAAS<br>CH <b>70618</b><br><b>W13A</b> | APP CRS<br><b>127°</b> | Rwy Idg<br>TDZE<br>Apt Elev | <b>4201</b><br><b>1402</b><br><b>1402</b> |
|--|------------------------|-----------------------------|---|

# RNAV (GPS) RWY 13

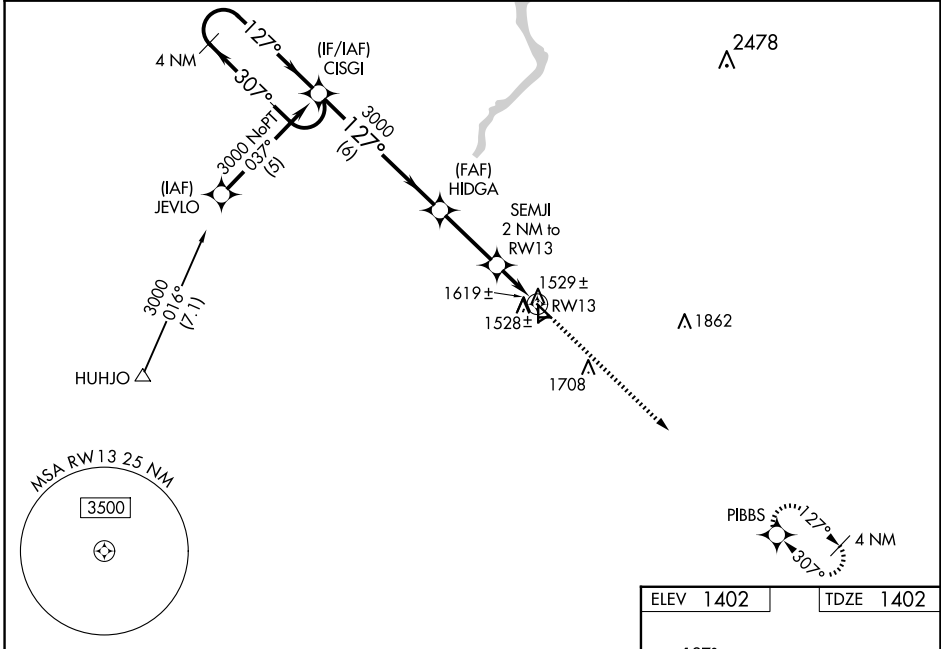
BARNES COUNTY MUNI (BAC)

RNP APCH - GPS.

**⚠** Baro-VNAV NA when using Jamestown altimeter setting. For uncompensated Baro-VNAV systems, LNAV/VNAV NA below -17°C or above 54°C. When local altimeter setting not received, use Jamestown altimeter setting: increase LPV DA to 1729 feet and all visibilities ¼ SM; increase LNAV/VNAV DA to 1966 and all visibilities ¼ SM; increase all MDA 80 feet and visibility LNAV Cat C and Circling Cat C ¼ SM. Circling NA to Rwy 5, 8, 17, 23, 26 and 35. Rwy 13 helicopter visibility reduction below ¾ SM NA.

**⚠** MISSED APPROACH: Climb to 3100 direct PIBBS and hold.

|                          |  |                               |
|--------------------------|--|-------------------------------|
| AWOS-3<br><b>118.725</b> | MINNEAPOLIS CENTER<br><b>124.2 270.3</b> | UNICOM<br><b>122.8 (CTAF)</b> |
|--------------------------|--|-------------------------------|

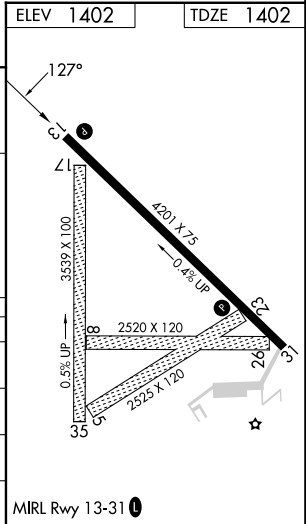


4 NM Holding Pattern

VGSI and RNAV glidepath not coincident (VGSI Angle 3.00/TCH 28).

GP 3.00° TCH 40

| CATEGORY     | A                     | B                     | C                       | D  |
|--------------|-----------------------|-----------------------|-------------------------|----|
| LPV DA       | 1652-1                | 250 (300-1)           |                         | NA |
| LNAV/VNAV DA | 1889-1¾               | 487 (500-1¾)          |                         | NA |
| LNAV MDA     | 1880-1                | 478 (500-1)           | 1880-1¼<br>478 (500-1¼) | NA |
| CIRCLING     | 1920-1<br>518 (600-1) | 2000-1<br>598 (600-1) | 2020-1¾<br>618 (700-1¾) | NA |



NC-1, 11 JUN 2026 to 09 JUL 2026

NC-1, 11 JUN 2026 to 09 JUL 2026