

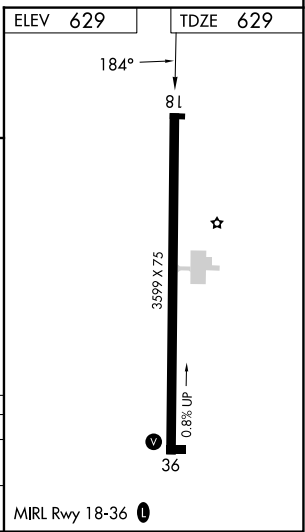
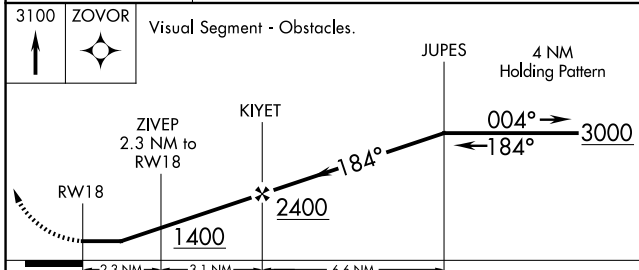
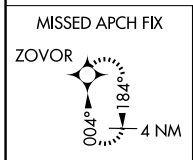
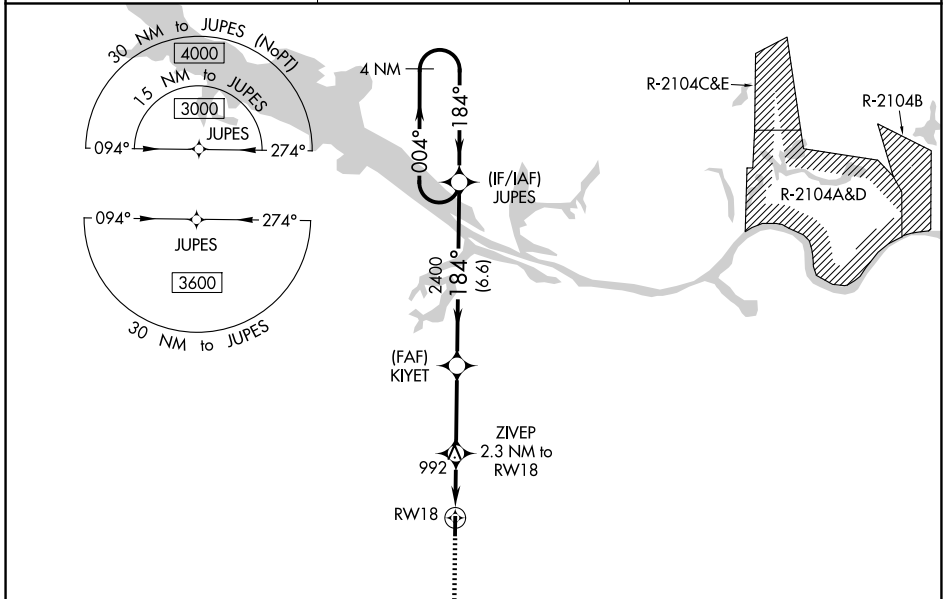
APP CRS	Rwly Ldg	3599
184°	TDZE	629
	Apt Elev	629

RNAV (GPS) RWY 18

HARTSELLE/MORGAN COUNTY RGNL (5M \emptyset)

RNP APCH.	<p>Procedure NA at night. Rwy 18 helicopter visibility reduction below 1 SM NA.</p> <p>▲ NA Use Huntsville Intl-Carl T Jones Fld altimeter setting; when not received, use Cullman altimeter setting and increase all MDA 40 feet.</p>	MISSED APPROACH: Climb to 3100 direct ZOVOR and hold.
-----------	--	---

HSV ATIS 121.25	HUNTSVILLE APP CON ★ 118.05 239.0	UNICOM 122.8 (CTAF) \emptyset
---------------------------	---	--



CATEGORY	A	B	C	D
LNVA MDA	1280-1	651 (700-1)	1280-1 $\frac{7}{8}$ 651 (700-1 $\frac{7}{8}$)	NA
CIRCLING	1280-1	651 (700-1)	1520-2 $\frac{3}{4}$ 891 (900-2 $\frac{3}{4}$)	NA

SE-4, 11 JUN 2026 to 09 JUL 2026

SE-4, 11 JUN 2026 to 09 JUL 2026