

APP CRS 259°	Rwy Ldg TDZE Apt Elev	3498 1047 1052
------------------------	-----------------------------	---

RNAV (GPS) RWY 26

ED NEWLON FLD (I86)

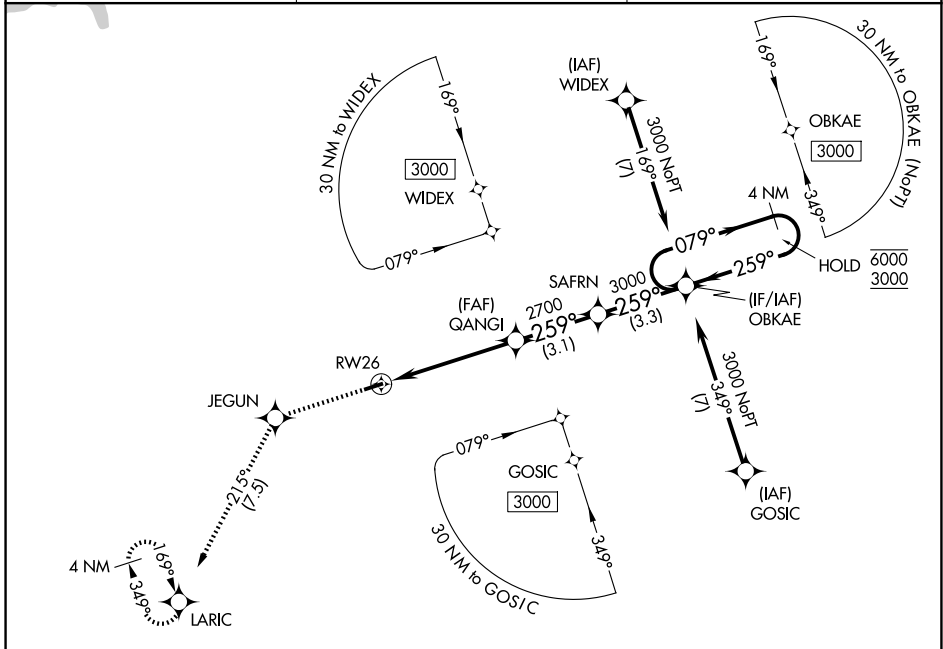
RNP APCH - GPS.

Rwy 26 helicopter visibility reduction below 1 SM NA. Use ZZY altimeter setting; when not received, use LHQ altimeter setting and increase all MDAs 20 feet and LNAV visibility Cat C 1/2 SM. Procedure NA at night.

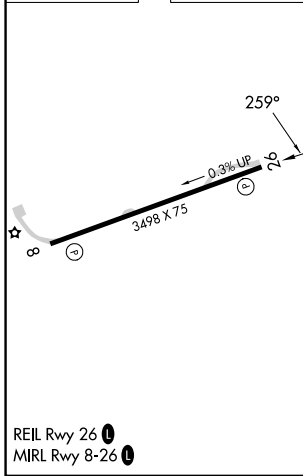
NA

MISSED APPROACH: Climb to 3000 direct JEGUN and on track 215° to LARIC and hold.

ZZY ASOS 127.0	INDIANAPOLIS CENTER 124.45 323.275	UNICOM 122.8 (CTAF) 0
--------------------------	--	---------------------------------



ELEV 1052	TDZE 1047
-----------	-----------



3000	JEGUN	LARIC	VGSI and descent angles not coincident (VGSI Angle 4.00/TCH 28).		4 NM Holding Pattern
↑		tr 215°	SAFRN	OBKAE	
	GANGL		079° →	← 259°	6000 3000
	RW26		259°		2700
			≤ 3.00° TCH 40		
			5.1 NM	3.1 NM	3.3 NM
CATEGORY	A	B	C	D	
LNAV MDA	1580-1	533 (600-1)	1580-1½ 533 (600-1½)	NA	
CIRCLING	1580-1	528 (600-1)	1760-2 708 (800-2)	NA	

EC-2, 11 JUN 2026 to 09 JUL 2026

EC-2, 11 JUN 2026 to 09 JUL 2026