

WAAS CH <b>77942</b> <b>W14A</b>	APP CRS <b>139°</b>	Rwy Ldg TDZE Apt Elev	<b>5000</b> <b>3412</b> <b>3430</b>
--	------------------------	-----------------------------	---

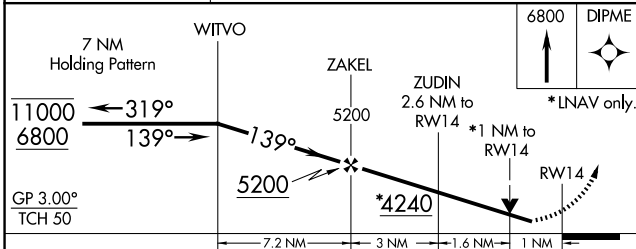
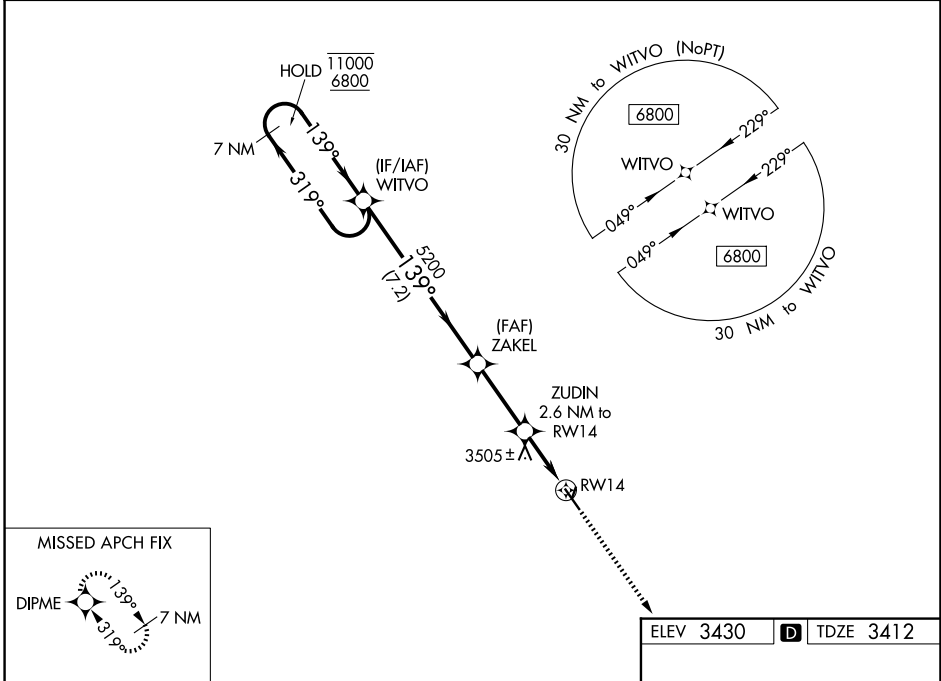
# RNAV (GPS) RWY 14

CHEYENNE COUNTY MUNI (SYF)

RNP APCH.  
 ⚠ Circling NA to Rwys 9, 27, 18 and 36. Rwy 14 helicopter visibility reduction below 3/4 SM NA. For uncompensated Baro-VNAV systems, LNAV/VNAV NA below -21°C or above 54°C.

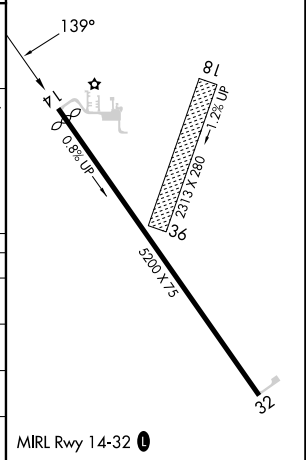
MISSED APPROACH: Climb to 6800 direct DIPME and hold, continue climb-in-hold to 6800.

AWOS-3P <b>118,925</b>	DENVER CENTER <b>132.7 226,675</b>	UNICOM <b>122.8 (CTAF) ①</b>
---------------------------	---------------------------------------	---------------------------------



ELEV 3430	<b>D</b> TDZE 3412
-----------	--------------------

CATEGORY	A	B	C	D
LPV DA	3662-1	250 (300-1)		NA
LNAV/VNAV DA	3662-1	250 (300-1)		NA
LNAV MDA	3760-1	348 (400-1)		NA
CIRCLING	3860-1 430 (500-1)	3880-1 450 (500-1)	3900-1½ 470 (500-1½)	NA



NC-2, 11 JUN 2026 to 09 JUL 2026

NC-2, 11 JUN 2026 to 09 JUL 2026