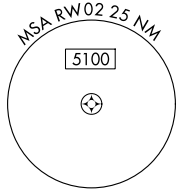
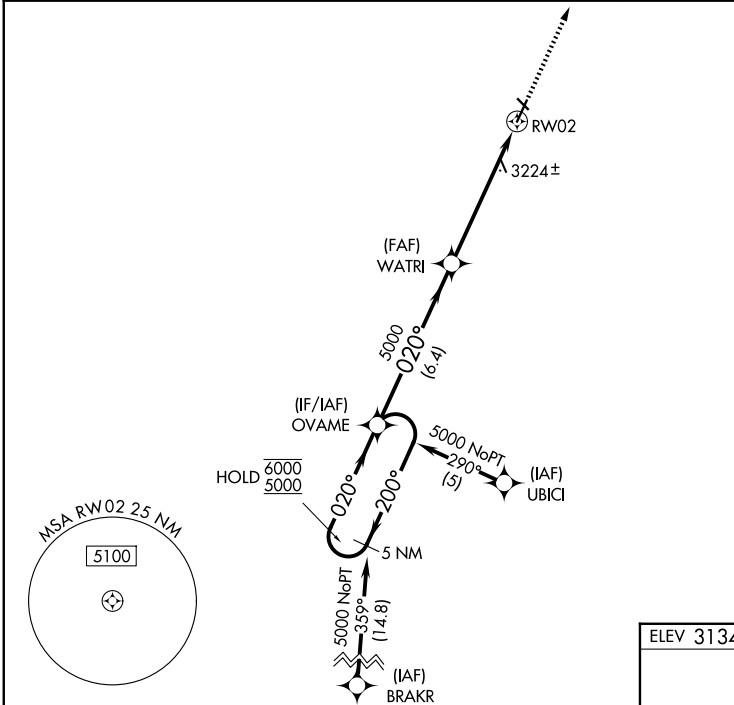


| | | | |
|--|------------------------|-----------------------------|---|
| WAAS CH 63003 W02A | APP CRS 020° | Rwy Ldg TDZE Apt Elev | 5000 3134 3134 |
|--|------------------------|-----------------------------|---|

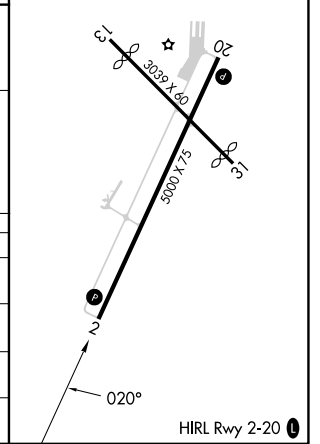
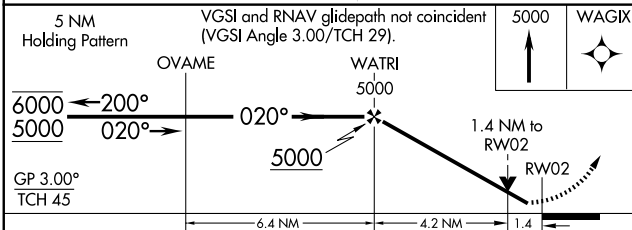
RNAV (GPS) RWY 2

HUGOTON MUNI (HQQ)

| | | |
|---|--|---|
| RNP APCH-GPS. | | MISSED APPROACH: Climb to 5000 direct WAGIX and hold. |
| <p>⚠ Circling Rwy 13, 31 NA at night. Rwy 2 helicopter visibility reduction below 3/4 SM NA. For uncompensated Baro-VNAV systems, procedure NA below -21°C or above 54°C.</p> | | |
| AWOS-3PT 118.6 | KANSAS CITY CENTER 134.0 257.625 | UNICOM 122.8 (CTAF) 0 |



| | |
|-----------|-----------|
| ELEV 3134 | TDZE 3134 |
|-----------|-----------|



| CATEGORY | A | B | C | D |
|--------------|--------------------|-------------|-------------------------------|----|
| LPV DA | 3384-1 250 (300-1) | | | NA |
| LNAV/VNAV DA | 3425-1 291 (300-1) | | | NA |
| LNAV MDA | 3600-1 | 466 (500-1) | 3600-1 3/8 466 (500-1 3/8) | NA |
| CIRCLING | 3660-1 | 526 (600-1) | 3980-2 1/2 846 (900-2 1/2) | NA |

NC-2, 11 JUN 2026 to 09 JUL 2026

NC-2, 11 JUN 2026 to 09 JUL 2026