

WAAS CH <b>70746</b> <b>W13A</b>	APP CRS <b>127°</b>	Rwy Idg TDZE Apt Elev	<b>6350</b> <b>215</b> <b>231</b>
--	------------------------	-----------------------------	---

# RNAV (GPS) RWY 13

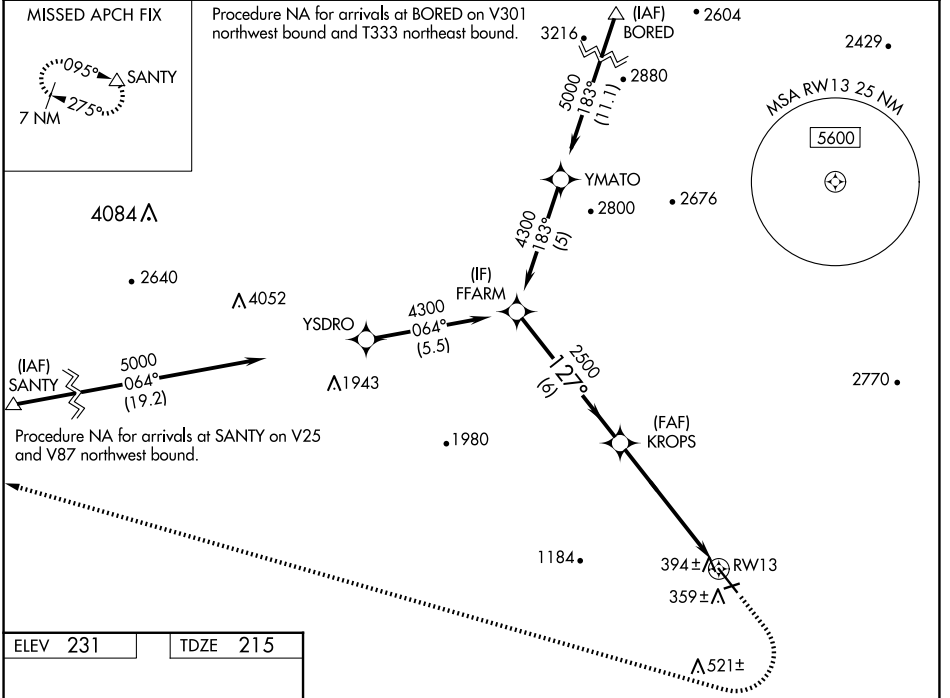
HOLLISTER MUNI (CVH)

RNP APCH - GPS.

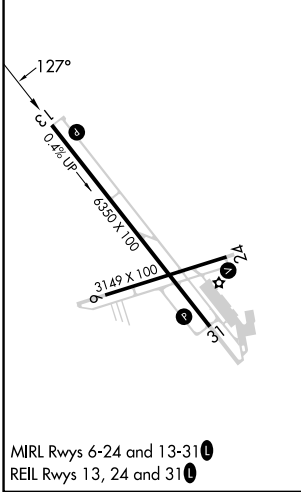
⚠ For uncompensated Baro-VNAV systems, LNAV/VNAV NA below -15°C or above 54°C.

MISSED APPROACH: (Do not exceed 200 KIAS until SNTY)  
Climb to 1100 then climbing right turn to 7000 direct SNTY and hold.  
\*Missed approach requires minimum climb of 245 feet per NM to 1900.

AWOS-3 <b>120.425</b>	NORCAL APP CON <b>124.525 348.675</b>	UNICOM <b>123.0 (CTAF) 0</b>
--------------------------	--	---------------------------------



ELEV 231	TDZE 215
----------	----------



VGSI and RNAV glidepath not coincident (VGSI Angle 3.00/TCH 44).

4300	2500	1100	7000	SNTY
GP 3.70°				
TCH 44				
6 NM	3.9 NM	1.9 NM		
FFARM	KROPS			
		1.9 NM to RW13		
			RW13	
CATEGORY	A	B	C	D
LPV DA	535-7/8 320 (400-7/8)			NA
LNAV/VNAV DA	1055-2 1/2 840 (900-2 1/2)			NA
LNAV/VNAV DA*	564-1 349 (400-1)			NA
LNAV MDA	840-1	625 (700-1)	840-1 3/4 625 (700-1 3/4)	NA

SW-2, 11 JUN 2026 to 09 JUL 2026

SW-2, 11 JUN 2026 to 09 JUL 2026