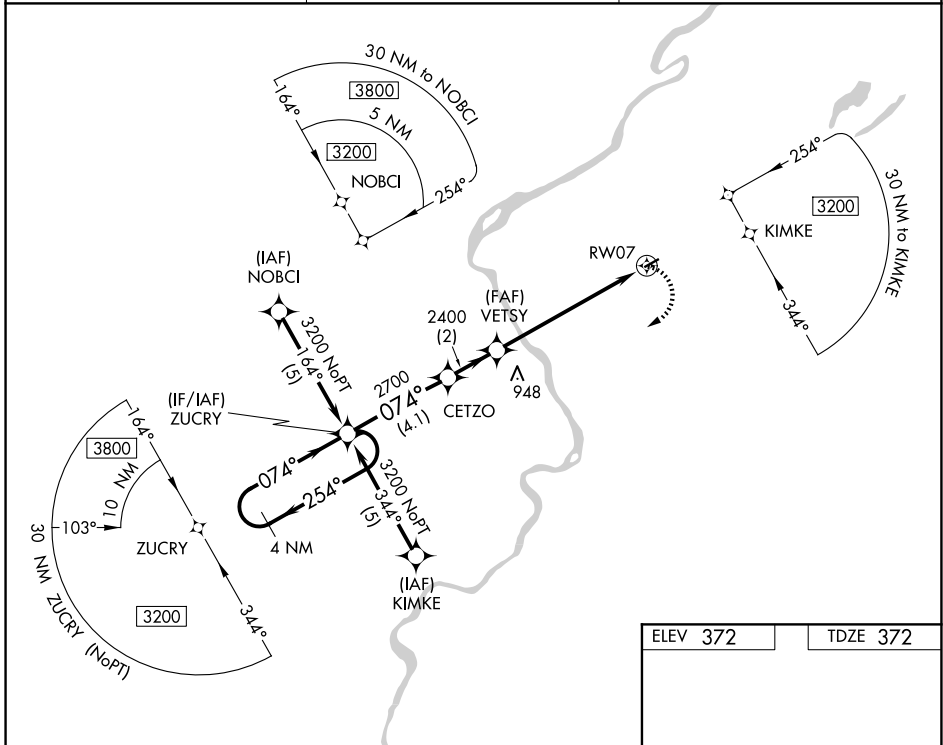


APP CRS 074°	Rwy Ldg TDZE Apt Elev	2794 372 372
------------------------	-----------------------------	---

RNAV (GPS) RWY 7

BLAIRSTOWN (1N7)

RNP APCH.		MISSED APPROACH: Climbing right turn to 3200 direct ZUCRY and hold.
<p>▼ When local altimeter setting not received, use Lehigh Valley altimeter setting. Procedure NA at night. Rwy 7 helicopter visibility reduction below 1 SM NA.</p> <p>▲ NA</p>		
NEWARK APP CON 123.775 379.9 (EAST)	ALLENTOWN APP CON 124.45 351.8 (WEST)	UNICOM 123.0 (CTAF)

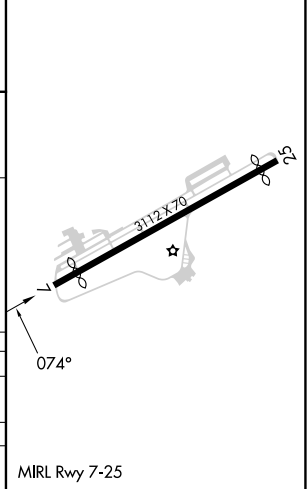


NE-2, 11 JUN 2026 to 09 JUL 2026

NE-2, 11 JUN 2026 to 09 JUL 2026

ELEV 372	TDZE 372
----------	----------

4 NM Holding Pattern		Visual Segment - Obstacles.		3200	ZUCRY
CATEGORY	A	B	C	D	
LNAV MDA	1140-1 768 (800-1)	1140-1¼ 768 (800-1¼)		NA	
LEHIGH VALLEY ALTIMETER SETTING MINIMUMS					
LNAV MDA	1420-1¼ 1048 (1100-1¼)	1420-1½ 1048 (1100-1½)		NA	



MIRL Rwy 7-25