

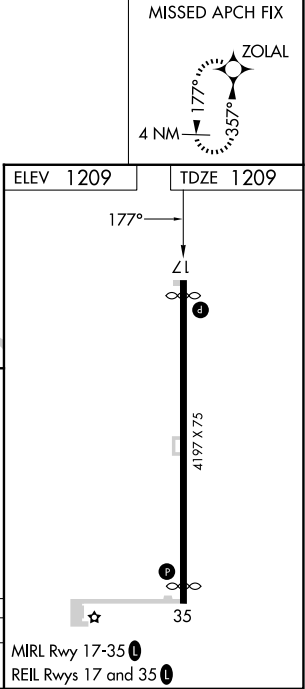
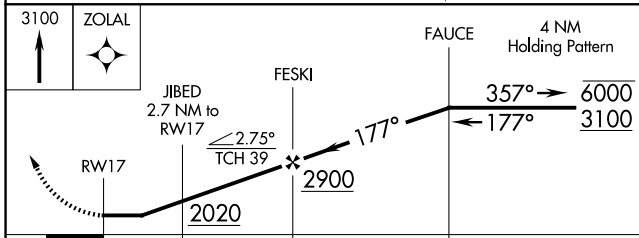
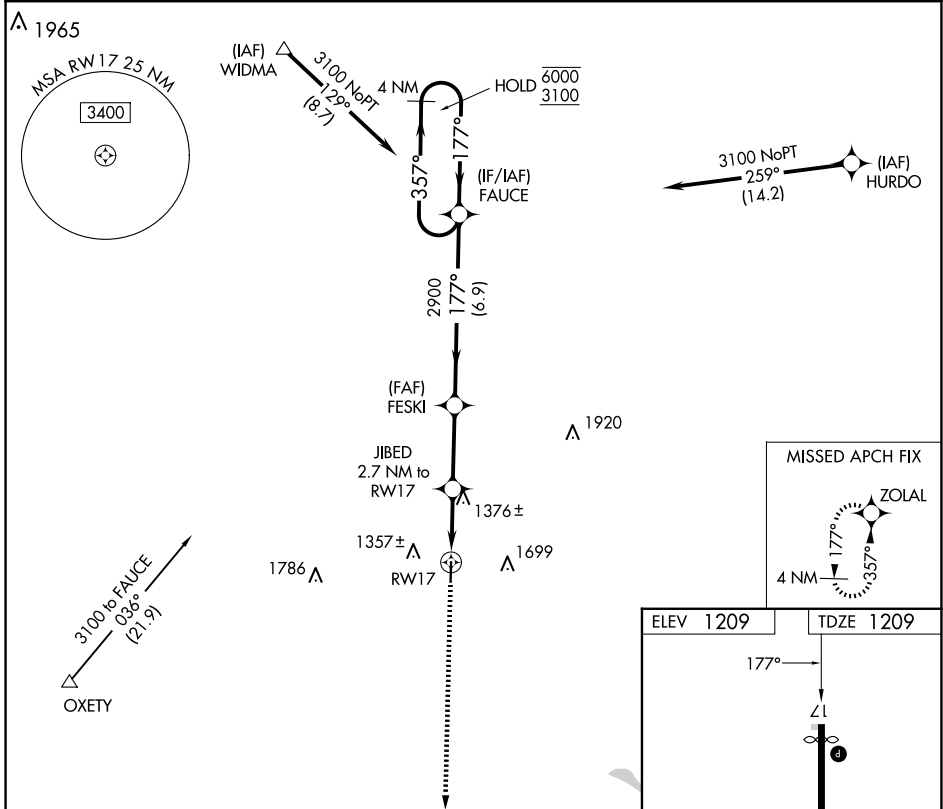
APP CRS 177°	Rwy Idg 3995
	TDZE 1209
	Apt Elev 1209

RNAV (GPS) RWY 17

CLAY CENTER MUNI (CYW)

RNP APCH.		MISSED APPROACH: Climb to 3100 direct ZOLAL and hold.
<p>▼ Procedure NA at night. Rwy 17 helicopter visibility reduction below 1 SM NA.</p> <p>▲ NA When local altimeter setting not received, use Salina altimeter setting and increase all MDA 120 feet and LNAV Cat C visibility 3/8 SM.</p>		

AWOS-3T 119.95	MARSHALL AAF GCA* 121.25 269.05	UNICOM 122.8 (CTAF) 0
--------------------------	---	---------------------------------



CATEGORY	A	B	C	D
LNAV MDA	1640-1	431 (500-1)	1640-1 1/4 431 (500-1 1/4)	NA

MIRL Rwy 17-35 0
REIL Rws 17 and 35 0

NC-2, 11 JUN 2026 to 09 JUL 2026

NC-2, 11 JUN 2026 to 09 JUL 2026