

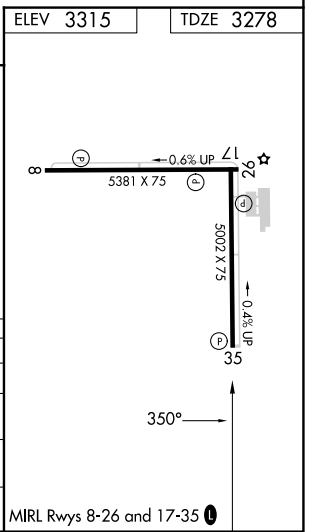
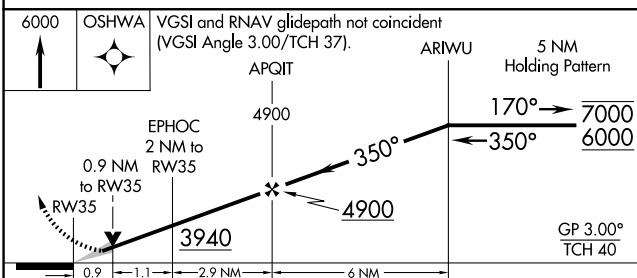
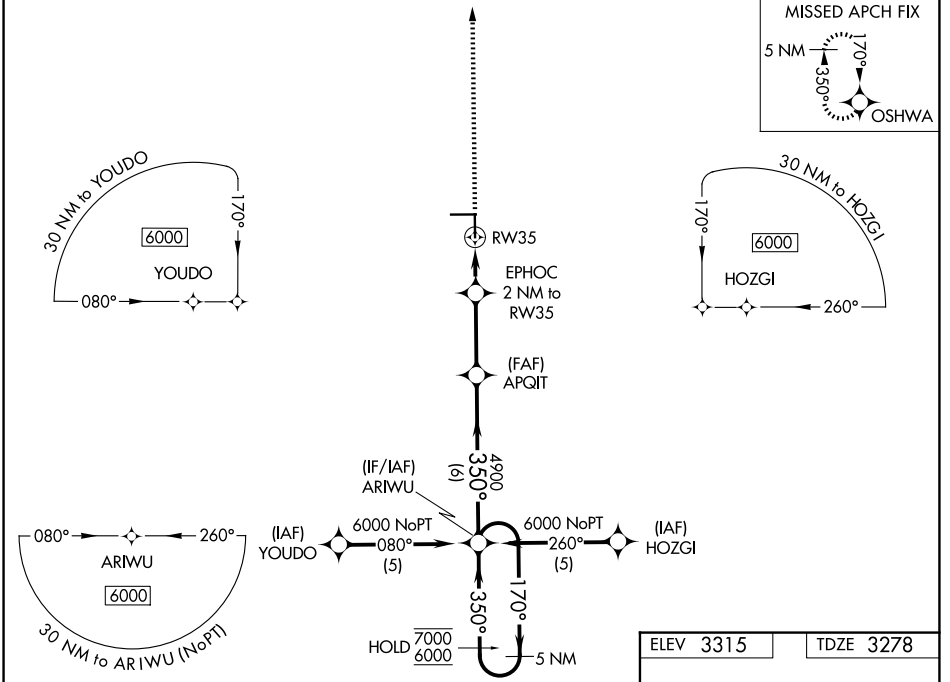
WAAS CH 72918 W35A	APP CRS 350°	Rwy Ldg TDZE Apt Elev	5002 3278 3315
--	------------------------	-----------------------------	---

RNAV (GPS) RWY 35

GAINES COUNTY (GNC)

RNP APCH - GPS.		MISSED APPROACH: Climb to 6000 direct OSHWA and hold, continue climb-in-hold to 6000.
For uncompensated Baro-VNAV systems, LNAV/VNAV NA below -21°C or above 54°C. Circling NA at night.		

AWOS-3 118.075	FORT WORTH CENTER 132.6 269.05	UNICOM 122.8 (CTAF) 0
--------------------------	--	---------------------------------



CATEGORY	A	B	C	D
LPV DA	3528-3/4	250 (300-3/4)		NA
LNAV/VNAV DA	3591-7/8	313 (300-7/8)		NA
LNAV MDA	3600-1	322 (300-1)		NA
CIRCLING	3840-1 525 (600-1)	3880-1 565 (600-1)	3960-1 3/4 645 (700-1 3/4)	NA

MIRL Rwy 8-26 and 17-35 0

SC-2, 11 JUN 2026 to 09 JUL 2026

SC-2, 11 JUN 2026 to 09 JUL 2026