

WAAS CH 63040 W27A	APP CRS 275°	Rwy Ldg TDZE Apt Elev 5540 7415 7415
--	------------------------	--

RNAV (GPS) RWY 27

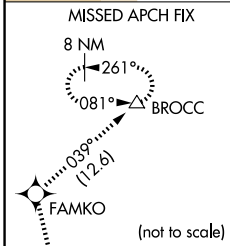
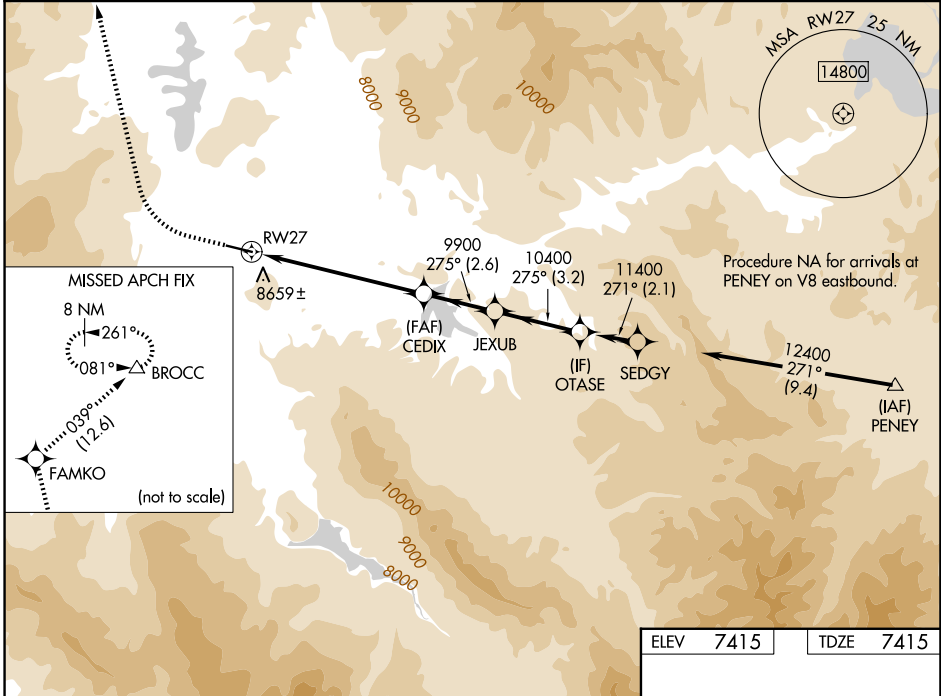
MC ELROY AIRFIELD (20V)

RNP APCH

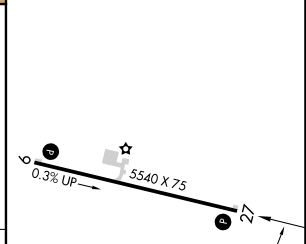
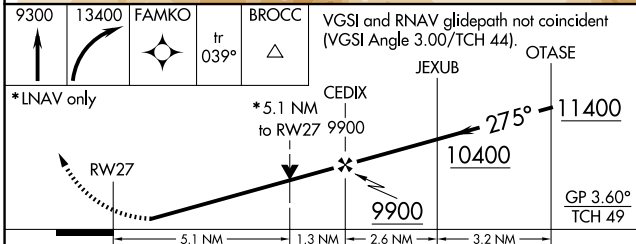
⚠ Circling to Rwy 9 NA at night. Circling NA south of Rwy 9-27.
⚠ Rwy 27 helicopter visibility reduction below 3/4 SM NA.
⚠ For uncompensated Baro-VNAV systems, LNAV/VNAV NA below -29°C or above 48°C.

MISSED APPROACH: Climb to 9300 then climbing right turn to 13400 direct FAMKO and on track 039° to BROCC and hold. # Missed approach requires minimum climb of 405 feet per NM to 10000.

AWOS-3 118.425	DENVER CENTER 128.65 282.2	UNICOM 122.8 (CTAF)
--------------------------	--------------------------------------	-------------------------------



ELEV	7415	TDZE	7415
------	------	------	------



CATEGORY	A	B	C	D
LPV DA #	8245-2 1/2	830 (900-2 1/2)		NA
LPV DA	9021-6	1606 (1700-6)		NA
LNAV/VNAV DA	8819-5	1404 (1500-5)		NA
LNAV MDA	9100-1 1/4 1685 (1700-1 1/4)	9100-1 1/2 1685 (1700-1 1/2)	9100-3 1685 (1700-3)	NA
CIRCLING	9100-1 1/4 1685 (1700-1 1/4)	9100-1 1/2 1685 (1700-1 1/2)	9220-3 1805 (1900-3)	NA

REIL Rwy 9 and 27 **ⓘ**
 MIRL Rwy 9-27 **ⓘ**

SW-1, 11 JUN 2026 to 09 JUL 2026

SW-1, 11 JUN 2026 to 09 JUL 2026