

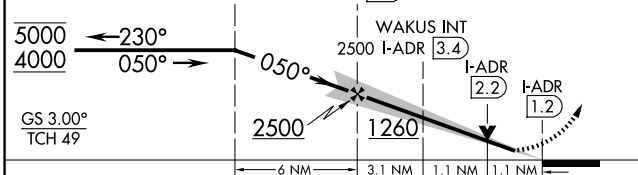
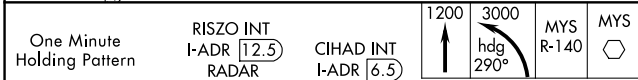
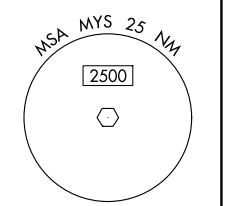
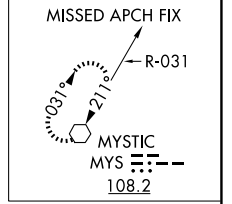
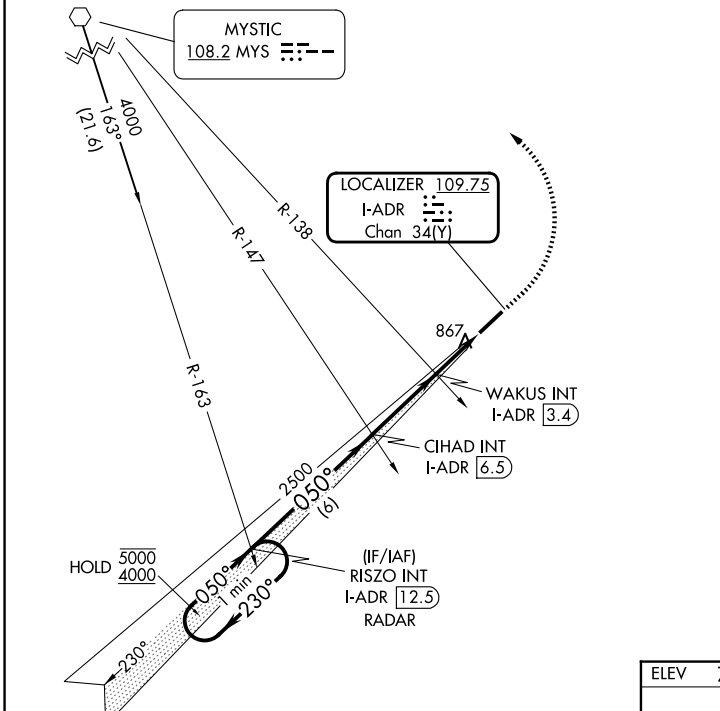
LOC/DME I-ADR <b>109.75</b> Chan <b>34(Y)</b>	APP CRS <b>050°</b>	Rwy Ldg TDZE Apt Elev <b>6001</b> <b>768</b> <b>776</b>
-----------------------------------------------------	------------------------	------------------------------------------------------------------------

# ILS or LOC RWY 5

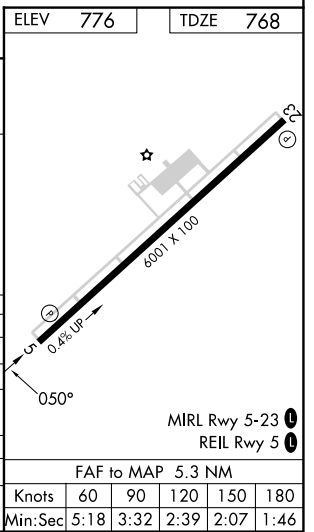
ADDINGTON FLD (EKK)

**MISSSED APPROACH:** Climb to 1200 then climbing left turn to 3000 on heading 290° and MYS R-140 to MYS VOR and hold.

AWOS-3 <b>118.55</b>	LOUISVILLE APP CON <b>123.675 327.0</b>	CLNC DEL <b>119.45</b>	UNICOM <b>123.075 (CTAF)</b>
-------------------------	--------------------------------------------	---------------------------	---------------------------------



CATEGORY	A	B	C	D
S-ILS 5	968-3/4		200 (200-3/4)	
S-LOC 5	1260-1	492 (500-1)	1260-1 3/8	492 (500-1 3/8)
CIRCLING	1260-1	484 (500-1)	1420-1 3/4 644 (700-1 3/4)	1760-3 984 (1000-3)
WAKUS FIX MINIMUMS (DUAL VOR RECEIVERS OR DME REQUIRED)				
S-LOC 5	1140-1		372 (400-1)	
CIRCLING	1240-1 464 (500-1)	1260-1 484 (500-1)	1420-1 3/4 644 (700-1 3/4)	1760-3 984 (1000-3)



SE-1, 11 JUN 2026 to 09 JUL 2026

SE-1, 11 JUN 2026 to 09 JUL 2026

FAF to MAP	5.3 NM				
Knots	60	90	120	150	180
Min:Sec	5:18	3:32	2:39	2:07	1:46