

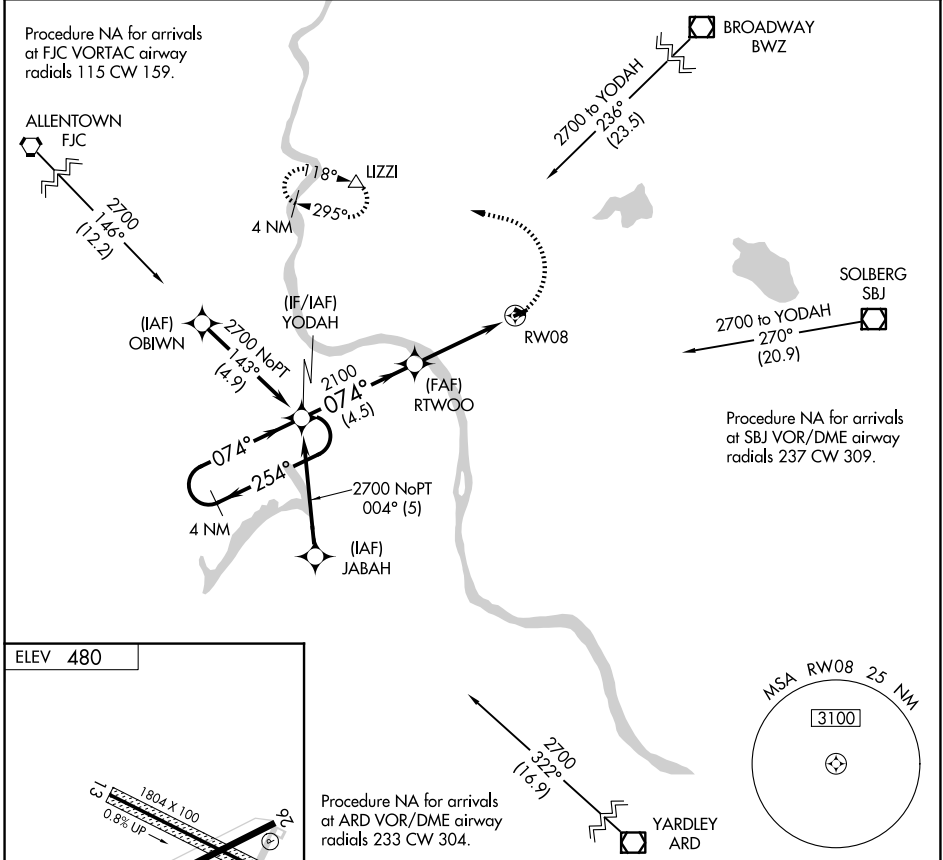
APP CRS	Rwy Ldg	N/A
074°	TDZE	N/A
	Apt Elev	480

# RNAV (GPS)-A

ALEXANDRIA (N85)

<p><b>▽</b> DME/DME RNP-0.3 NA. Use Lehigh Valley Intl, Allentown, PA altimeter setting. Procedure NA at night. Helicopter visibility reduction below 1 SM NA.</p> <p><b>▲</b> NA</p>	<p>MISSED APPROACH: Climbing left turn to 3000 direct LIZZI and hold, continue climb-in-hold to 3000.</p>
---	---

<p>ALLENTOWN APP CON</p> <p><b>119.65 124.45 351.8</b></p>	<p>UNICOM</p> <p><b>122.975 (CTAF)</b></p>	<p><b>121.8 0</b></p>
--	--	-----------------------



<p>4 NM Holding Pattern</p> <p>YODAH</p> <p>2700 ← 254°</p> <p>074° →</p> <p>074°</p>	<p>VGSI and descent angles not coincident (VGSI Angle 3.30/TCH 38).</p> <p>RTWOO</p> <p>2100</p> <p>3.77° TCH 35</p> <p>4.5 NM</p> <p>4 NM</p>	<p>3000</p> <p>LIZZI</p> <p>▲</p>
<p>CATEGORY</p> <p>A</p>	<p>B</p>	<p>C</p>
<p>CIRCLING</p> <p>1240-1</p> <p>760 (800-1)</p>	<p>NA</p>	

NE-2, 11 JUN 2026 to 09 JUL 2026

NE-2, 11 JUN 2026 to 09 JUL 2026