

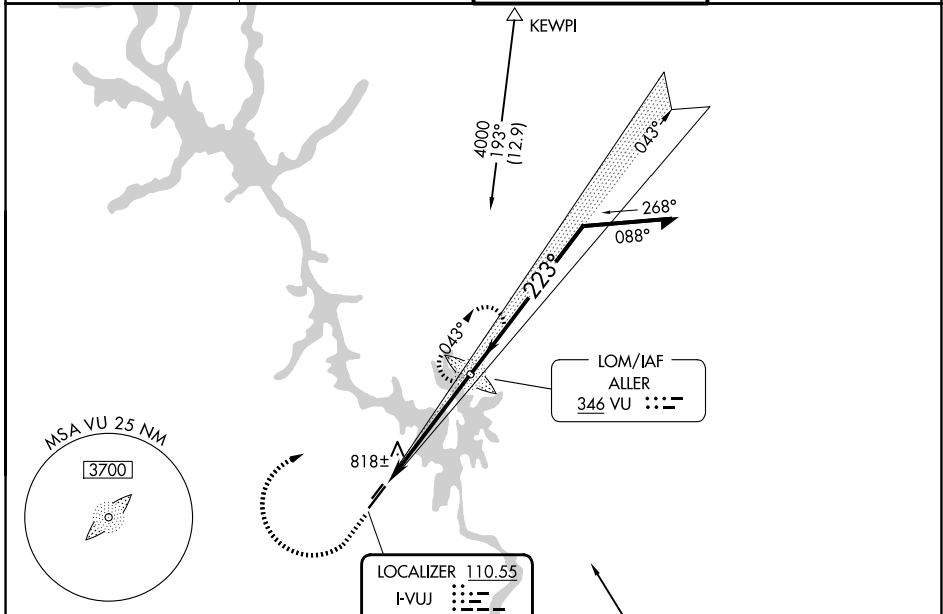
LOC I-VUJ	APP CRS	Rwy Ldg	5499
<b>110.55</b>	<b>223°</b>	TDZE	<b>584</b>
		Apt Elev	<b>609</b>

# ILS or LOC RWY 22L

STANLY COUNTY (VUJ)

ADF required.	MISSED APPROACH: Climb to 1500 then climbing right turn to 4000 direct ALLER LOM and hold, continue climb-in-hold to 4000.
⚠️ Circling Rwy 4L, 22R NA at night. Rwy 22L helicopter visibility reduction below ¾ SM NA.	

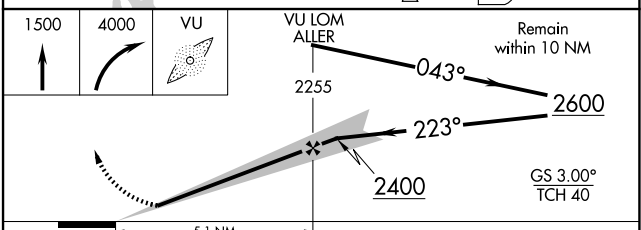
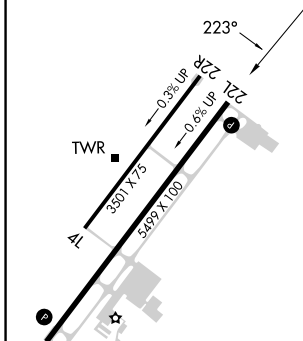
AWOS-3 <b>128.175</b>	CHARLOTTE APP CON <b>128.325 307.8</b>	STANLY COUNTY TOWER★ <b>126.275 (CTAF) 0 291.9</b>	GND CON <b>121.75 254.375</b>
--------------------------	---	---	----------------------------------



SE-2, 11 JUN 2026 to 09 JUL 2026

SE-2, 11 JUN 2026 to 09 JUL 2026

ELEV 609	TDZE 584
----------	----------



REIL Rwys 4R and 22L	1
MIRL Rwys 4L-22R	1
HIRL Rwys 4R-22L	1
FAF to MAP 5.1 NM	
Knots	60 90 120 150 180
Min:Sec	5:06 3:24 2:33 2:02 1:42
CATEGORY	A B C D
S-ILS 22L	916-1 332 (400-1)
S-LOC 22L	1100-1 516 (500-1) 1100-1 516 (500-1 1/8)
CIRCLING	1260-1 651 (700-1) 1260-1 651 (700-1 3/4) 1380-2 771 (800-2 1/2)