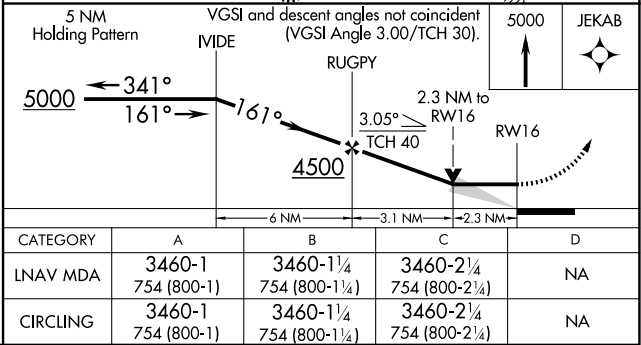
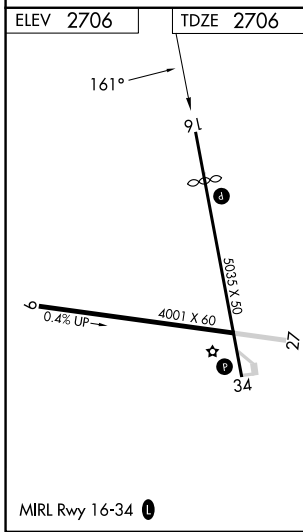
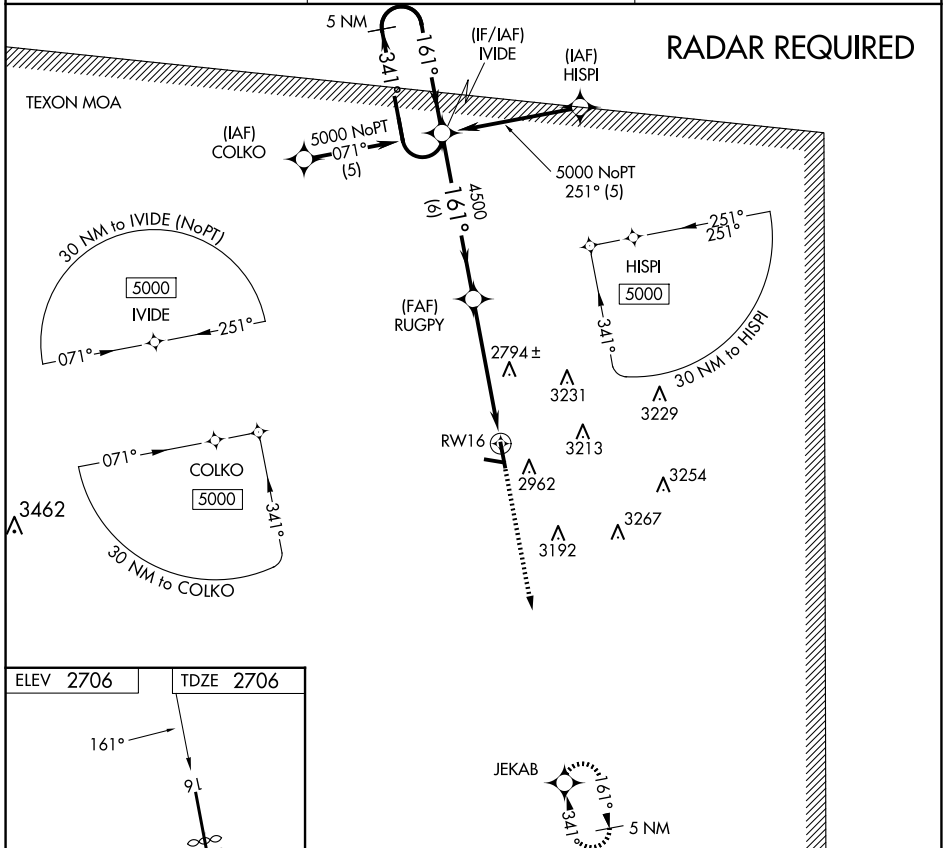


APP CRS	Rwy Idg	4030
161°	TDZE	2706
	Apt Elev	2706

RNAV (GPS) RWY 16

REAGAN COUNTY (E41)

RNP APCH		MISSED APPROACH: Climb to 5000 direct JEKAB and hold.	
▼ When local altimeter not received, use San Angelo altimeter setting. Circling NA east of Rwy 16-34. ▲		AWOS-3PT 118.4	FORT WORTH CENTER 126.15 322.55
		CTAF 122.9	



SC-3, 11 JUN 2026 to 09 JUL 2026

SC-3, 11 JUN 2026 to 09 JUL 2026