

WAAS CH 78335 W14A	APP CRS 143°	Rwy Ldg 4400 TDZE 1798 Apt Elev 1800
--	------------------------	---

RNAV (GPS) RWY 14

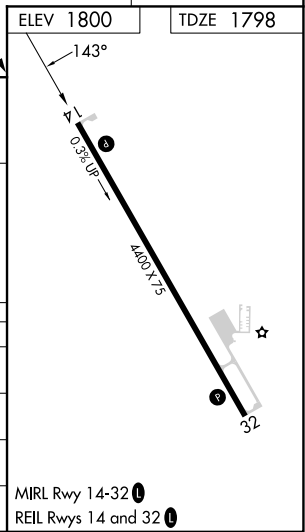
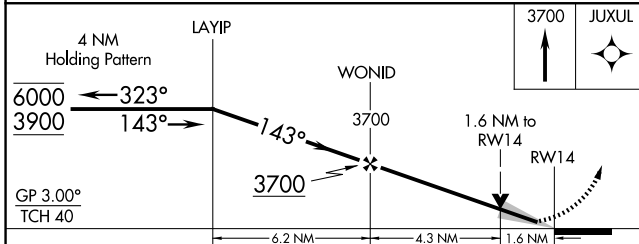
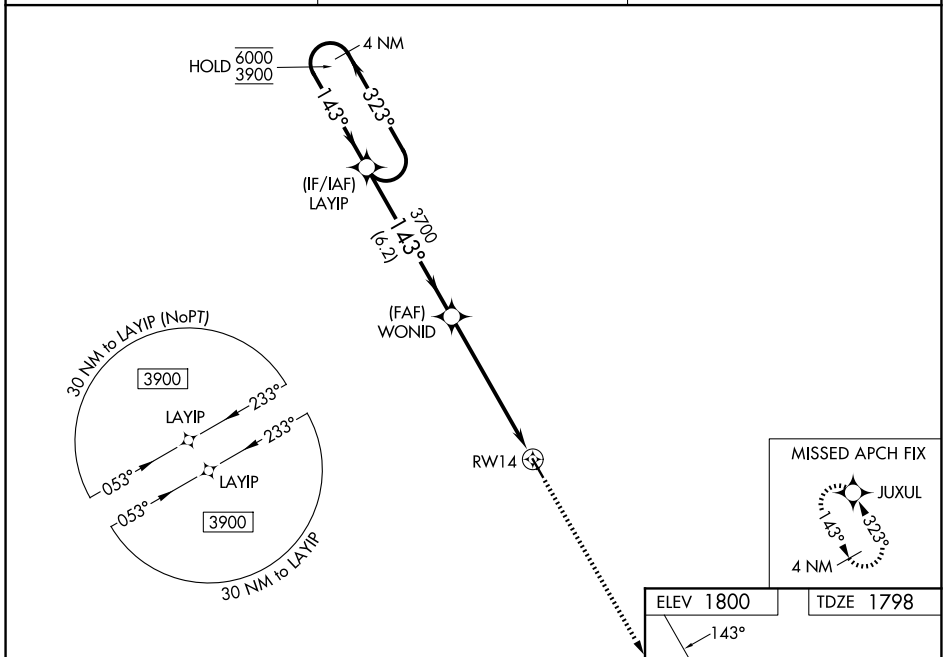
SMITH CENTER MUNI (K82)

RNP APCH - GPS.

⚠ For uncompensated Baro-VNAV systems, LNAV/VNAV NA below -18°C or above 54°C. Baro-VNAV and VDP NA when using CNK altimeter setting. When local altimeter setting not received, use CNK altimeter setting: increase LPV DA to 2172 feet; increase LNAV/VNAV DA to 2250 and all visibilities $\frac{3}{8}$ SM; increase all MDAs 180 feet and Circling all Cats visibility $\frac{1}{2}$ SM.

MISSED APPROACH: Climb to 3700 direct JUXUL and hold.

AWOS-3PT 118.45	MINNEAPOLIS CENTER 119.4 278.8	UNICOM 122.8 (CTAF) 0
----------------------------------	---	--



CATEGORY	A	B	C	D
LPV DA	1998-1	200 (200-1)		NA
LNAV/VNAV DA	2076-1	278 (300-1)		NA
LNAV MDA	2320-1	522 (600-1)		NA
CIRCLING	2480-1 680 (700-1)	2580-1 780 (800-1)		NA

NC-2, 11 JUN 2026 to 09 JUL 2026

NC-2, 11 JUN 2026 to 09 JUL 2026