

WAAS CH 48826 W09A	APP CRS 092°	Rwy Ldg TDZE Apt Elev	4699 774 774
--	------------------------	-----------------------------	---

RNAV (GPS) RWY 9

GLADWIN ZETTEL MEML (GDW)

RNP APCH.

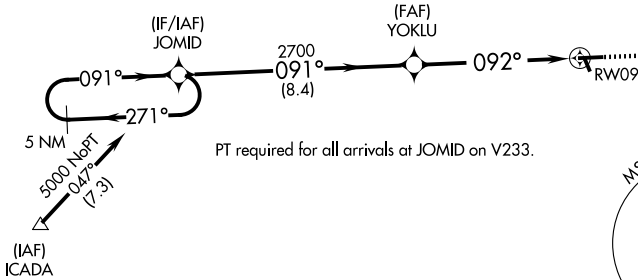
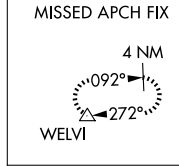
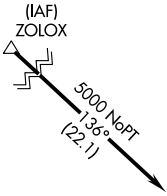
⚠ Circling NA to Rwy 15 and 33. Rwy 9 helicopter visibility reduction below 1 SM NA. DME/DME RNP-0.3 NA. Procedure NA at night. Use Mount Pleasant altimeter setting; when not received, use Midland altimeter setting and increase all MDA 20 feet; increase LP and LNAV Cats C/D visibility $\frac{1}{8}$ SM.

MISSED APPROACH: Climb to 3000 direct WELVI and hold.

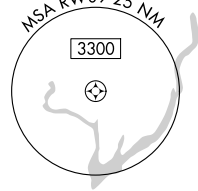
AWOS-3PT
118.975

GREAT LAKES APP CON *
126.45 235.625

UNICOM
122.8 (CTAF) 0



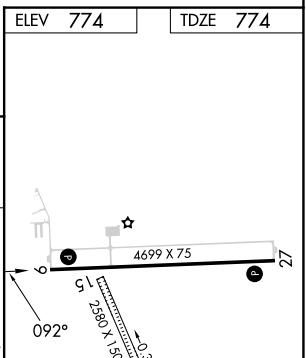
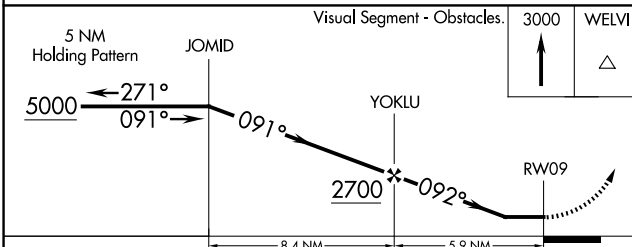
PT required for all arrivals at JOMID on V233.



EC-1, 11 JUN 2026 to 09 JUL 2026

EC-1, 11 JUN 2026 to 09 JUL 2026

ELEV 774	TDZE 774
----------	----------



CATEGORY	A	B	C	D
LP MDA	1440-1	666 (700-1)	1440-1 $\frac{7}{8}$	666 (700-1 $\frac{1}{8}$)
LNAV MDA	1440-1	666 (700-1)	1440-1 $\frac{7}{8}$	666 (700-1 $\frac{1}{8}$)
CIRCLING	1440-1 666 (700-1)	1500-1 726 (800-1)	1520-2 $\frac{1}{4}$ 746 (800-2 $\frac{1}{4}$)	1700-3 926 (1000-3)

REIL Rwy 9 and 27 **0**
MIRL Rwy 9-27 **0**