

APP CRS <b>274°</b>	Rwy Ldg TDZE Apt Elev	<b>3250</b> <b>458</b> <b>458</b>
------------------------	-----------------------------	---

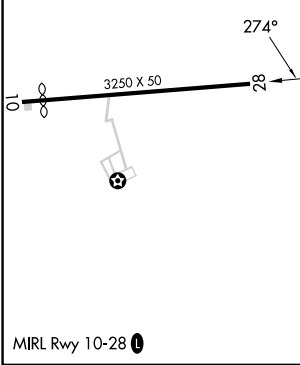
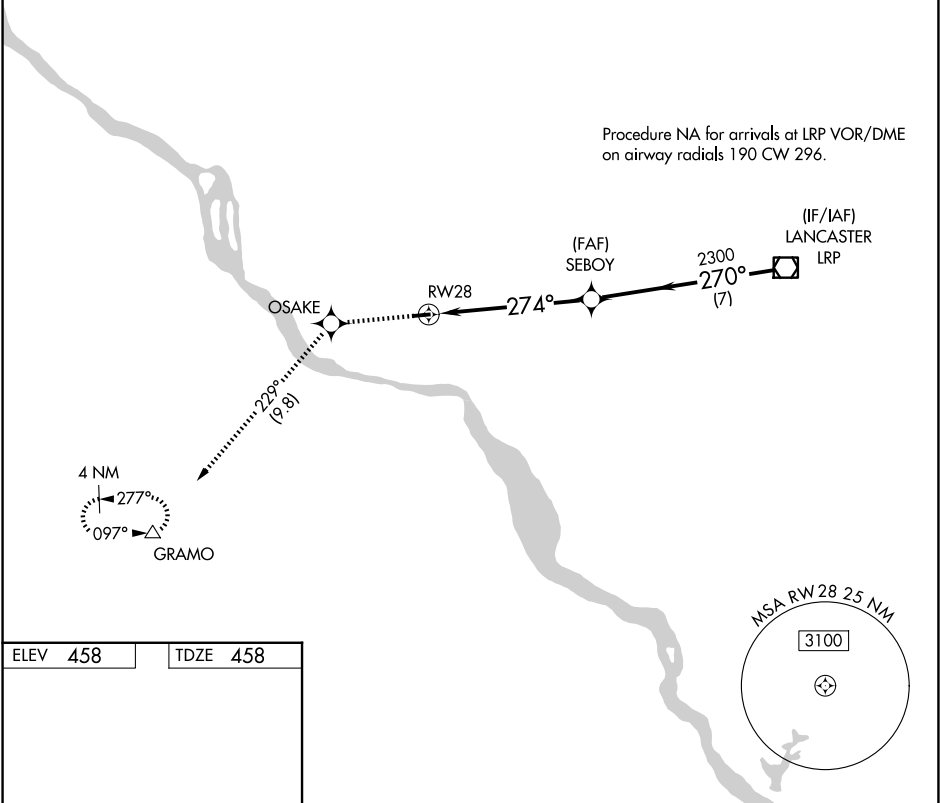
# RNAV (GPS) RWY 28

DONEGAL SPRINGS AIRPARK (N71)

RNP APCH - GPS.  
 ▼ Rwy 28 helicopter visibility reduction below 3/4 SM NA. Use MDT altimeter setting; when not received, use MUI altimeter setting and increase all MDAs 20 feet. Procedure NA at night.  
 ▲ NA

MISSED APPROACH: Climb to 3000 direct OSAKE and on track 229° to GRAMO and hold.

MDT ASOS <b>118.8</b>	HARRISBURG APP CON <b>126.45 281.525</b>	CLNC DEL <b>127.05</b>	UNICOM <b>122.8 (CTAF)</b>
--------------------------	---	---------------------------	-------------------------------



3000	OSAKE	GRAMO	LRP VOR/DME
↑	✦	tr 229°	△
	RW28	SEBOY	
	274°	2300	2600
	5.8 NM	7 NM	
CATEGORY	A	B	C
LNAV MDA	920-1	462 (500-1)	NA
CIRCLING	920-1 462 (500-1)	940-1 482 (500-1)	NA

NE-4, 11 JUN 2026 to 09 JUL 2026

NE-4, 11 JUN 2026 to 09 JUL 2026