


LOC I-RGK 110.1	APP CRS 091°	Rwy Ldg TDZE Apt Elev	5010 778 778
---------------------------	------------------------	-----------------------------	---

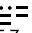
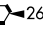
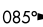
ILS or LOC RWY 9

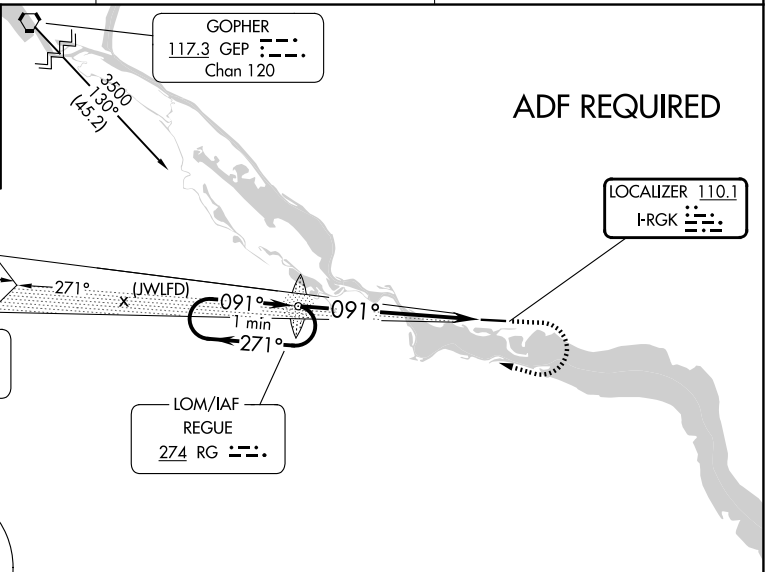
RED WING RGNL (RGK)

ADF Required. When local altimeter setting not received, use South St. Paul altimeter setting; increase S-ILS 9 DA to 1050 feet; increase all MDA 80 feet and visibility S-LOC 9 Cat C/D 1/8 SM and Circling Cat B/C 1/4 SM. For inop MALS, increase S-LOC 9 Cat C/D visibility 1/4 mile. For inop MALS when using South St. Paul altimeter setting, increase S-ILS 9 all Cats visibility 3/8 mile, and S-LOC 9 Cat C/D visibility 3/4 mile.

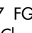
MALS
 **MISSED APPROACH:**
 Climb to 2000 then climbing right turn to 3000 direct REGUE LOM and hold.

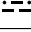
AWOS-3 119.25	MINNEAPOLIS APP CON 121.2 335.65	UNICOM 123.05 (CTAF)
-------------------------	--	--------------------------------

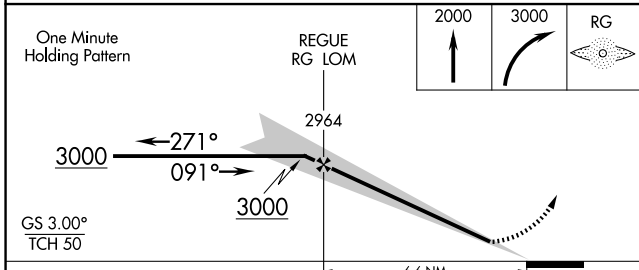
ALTERNATE MISSED APCH FIX
FARMINGTON
 FGT 
 115.7
 Chan 104
 R-085




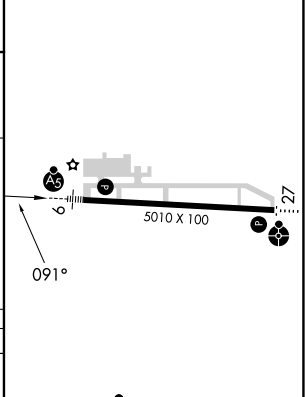
ADF REQUIRED

FARMINGTON
 115.7 FGT 
 Chan 104


LOM/IAF REGUE
 274 RG 



ELEV 778	TDZE 778
----------	----------



CATEGORY	A	B	C	D
S-ILS 9	978-1/2 200 (200-1/2)			
S-LOC 9	1520-1/2 742 (800-1/2)	1520-3/4 742 (800-3/4)	1520-1 3/4 862 (900-2 1/2)	742 (800-1 3/4)
CIRCLING	1520-1 742 (800-1)	1640-2 1/2 1002 (1100-3)		1780-3

HIRL Rwy 9-27 

FAF to MAP 6.6 NM

Knots	60	90	120	150	180
Min:Sec	6:36	4:24	3:18	2:38	2:12

NC-1, 11 JUN 2026 to 09 JUL 2026

NC-1, 11 JUN 2026 to 09 JUL 2026