

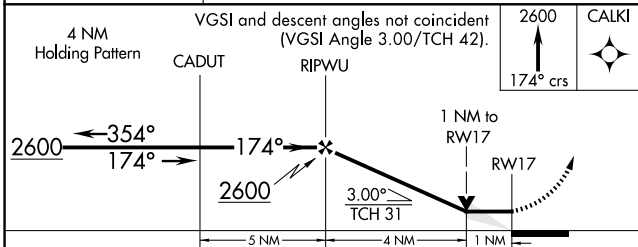
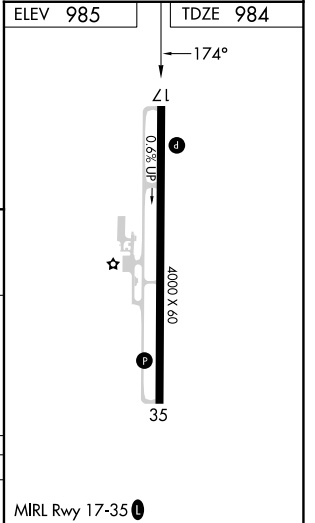
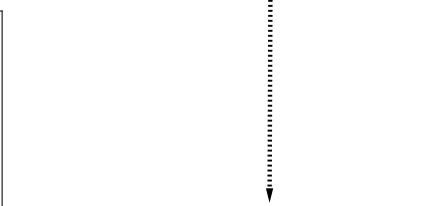
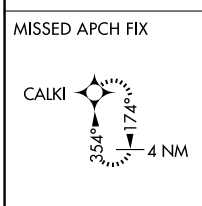
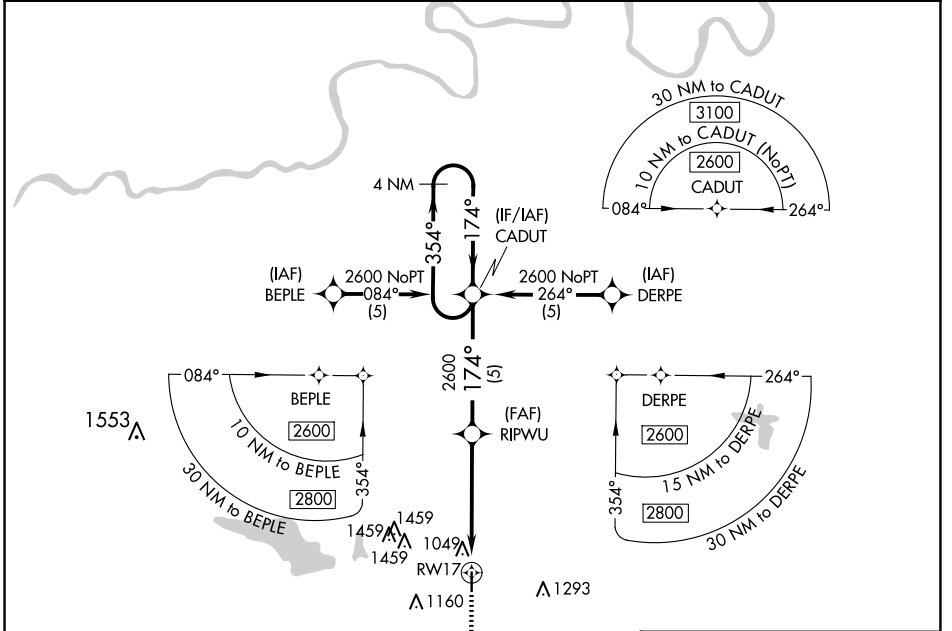
APP CRS	Rwy Idg	<b>4000</b>
<b>174°</b>	TDZE	<b>984</b>
	Apt Elev	<b>985</b>

# RNAV (GPS) RWY 17

CHANDLER RGNL (CQB)

RNP APCH.	MISSED APPROACH: Climb to 2600 via 174° course to CALKI WP and hold.
<p><b>▼</b> When local altimeter setting not received, use Shawnee altimeter setting and increase all MDA 80 feet; increase LNAV Cat C visibility 1/8 SM.</p> <p><b>▲</b></p>	

AWOS-3PT <b>119.275</b>	KANSAS CITY CENTER <b>127.8 319.1</b>	CTAF <b>122.9</b>
----------------------------	--	----------------------



CATEGORY	A	B	C	D
LNAV MDA	1300-1	316 (400-1)		NA

SC-1, 11 JUN 2026 to 09 JUL 2026

SC-1, 11 JUN 2026 to 09 JUL 2026