


LOC I-LVN 108.9	APP CRS 294°	Rwy Ldg 3707 TDZE 958 Apt Elev 961
---------------------------	------------------------	---

ILS or LOC RWY 30

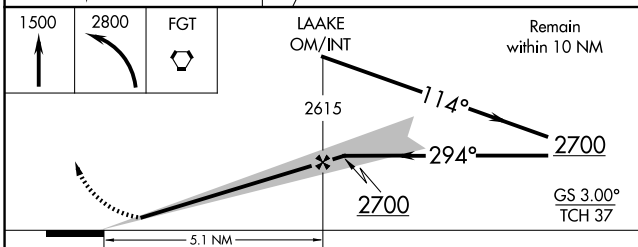
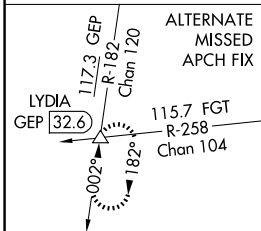
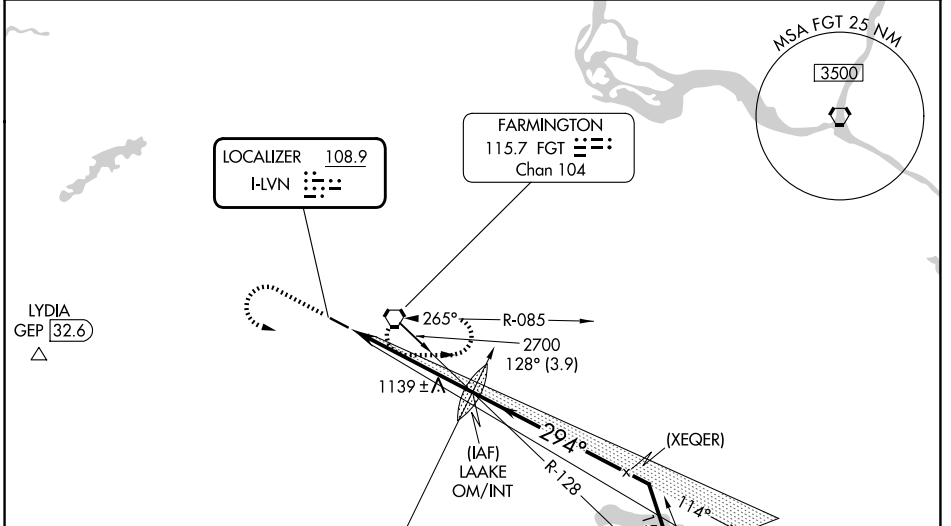
AIRLAKE (LVN)

⚠ NA When Circling to Rwy 12 at night, operational VGSi required, remain on or above VGSi glidepath until threshold. Rwy 30 helicopter visibility reduction below ¼ SM NA. For inop ALS, increase S-LOC Cats A/B visibility to 1 SM.

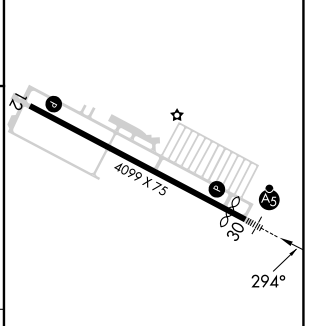
MALSR 

MISSED APPROACH: Climb to 1500 then climbing left turn to 2800 direct FGT VORTAC and hold.



AWOS-3 118.0	MINNEAPOLIS APP CON 134.7 284.7	CLNC DEL 118.95	UNICOM 123.05 (CTAF) 
------------------------	---	---------------------------	--



ELEV 961	 TDZE 958
----------	--



CATEGORY	A	B	C	D
S-ILS 30	1208-¾ 250 (300-¾)			
S-LOC 30	1400-¾	442 (500-¾)	1400-⅞	442 (500-⅞)
CIRCLING	1460-1	499 (500-1)	1660-2 699 (700-2)	1700-2¼ 739 (800-2¼)

REIL Rwy 12 					
HIRL Rwy 12-30 					
FAF to MAP 5.1 NM					
Knots	60	90	120	150	180
Min:Sec	5:06	3:24	2:33	2:02	1:42

NC-1, 11 JUN 2026 to 09 JUL 2026

NC-1, 11 JUN 2026 to 09 JUL 2026