

WAAS CH <b>72917</b> <b>W07A</b>	APP CRS <b>074°</b>	Rwy Ldg TDZE Apt Elev	<b>7299</b> <b>1460</b> <b>1478</b>
--	------------------------	-----------------------------	---

# RNAV (GPS) RWY 7R

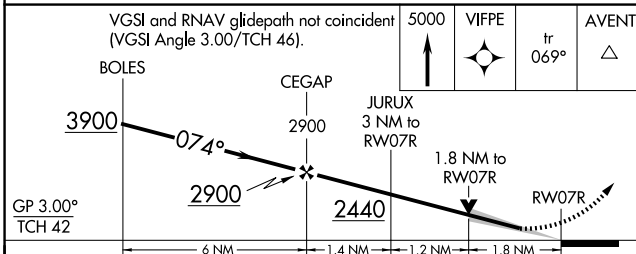
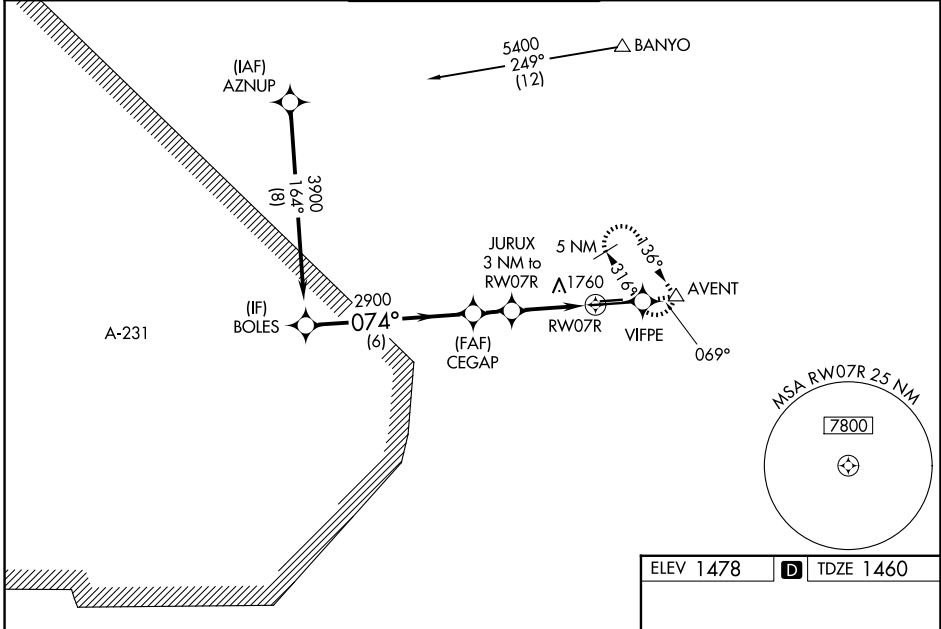
PHOENIX DEER VALLEY (DVT)

RNP APCH - GPS.

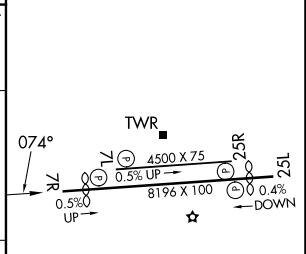
⚠ When VGSI inop, Circling Rwy 25R NA at night. When local altimeter setting not received, use Scottsdale altimeter setting: increase LPV DA to 1822 feet and all visibilities  $\frac{1}{8}$  SM, increase LNAV/VNAV DA to 2160 feet and all visibilities  $\frac{1}{8}$  SM, increase all MDAs 40 feet and increase Circling Cat B visibility  $\frac{1}{4}$  SM. For uncompensated Baro-VNAV systems, LNAV/VNAV NA below -17°C or above 54°C. Baro VNAV and VDP NA when using Scottsdale altimeter setting. Circling NA north of Rwy 7R-25L at night.

MISSED APPROACH: Climb to 5000 direct VIFPE and track 069° to AVENT and hold, continue climb-in-hold to 5000.

ATIS <b>126.5</b>	PHOENIX APP CON <b>120.7 239.0</b>	DEER VALLEY TOWER ★ <b>118.4</b> (070°-250°) (CTAF) <b>120.2</b> (251°-069°)	GND CON <b>121.8</b>	UNICOM <b>122.95</b>
----------------------	---------------------------------------	--	-------------------------	-------------------------



ELEV 1478	<b>D</b> TDZE 1460
-----------	--------------------



CATEGORY	A	B	C	D
LPV DA		1795-1 $\frac{1}{8}$	335 (400-1 $\frac{1}{8}$ )	
LNAV/VNAV DA		2133-2 $\frac{1}{2}$	673 (700-2 $\frac{1}{2}$ )	
LNAV MDA	2060-1	600 (600-1)	2060-1 $\frac{3}{4}$	600 (600-1 $\frac{3}{4}$ )
CIRCLING	2400-1 $\frac{1}{4}$ 922 (1000-1 $\frac{1}{4}$ )	2420-1 $\frac{1}{4}$ 942 (1000-1 $\frac{1}{4}$ )	2580-3 1102 (1200-3)	2700-3 1222 (1300-3)

MIRL Rwy 7L-25R and 7R-25L  
REIL Rwy 7L, 7R, 25L, and 25R

SW-4, 11 JUN 2026 to 09 JUL 2026

SW-4, 11 JUN 2026 to 09 JUL 2026