

APP CRS	Rwy Ldg	3998
028°	TDZE	268
	Apt Elev	270

RNAV (GPS) RWY 3

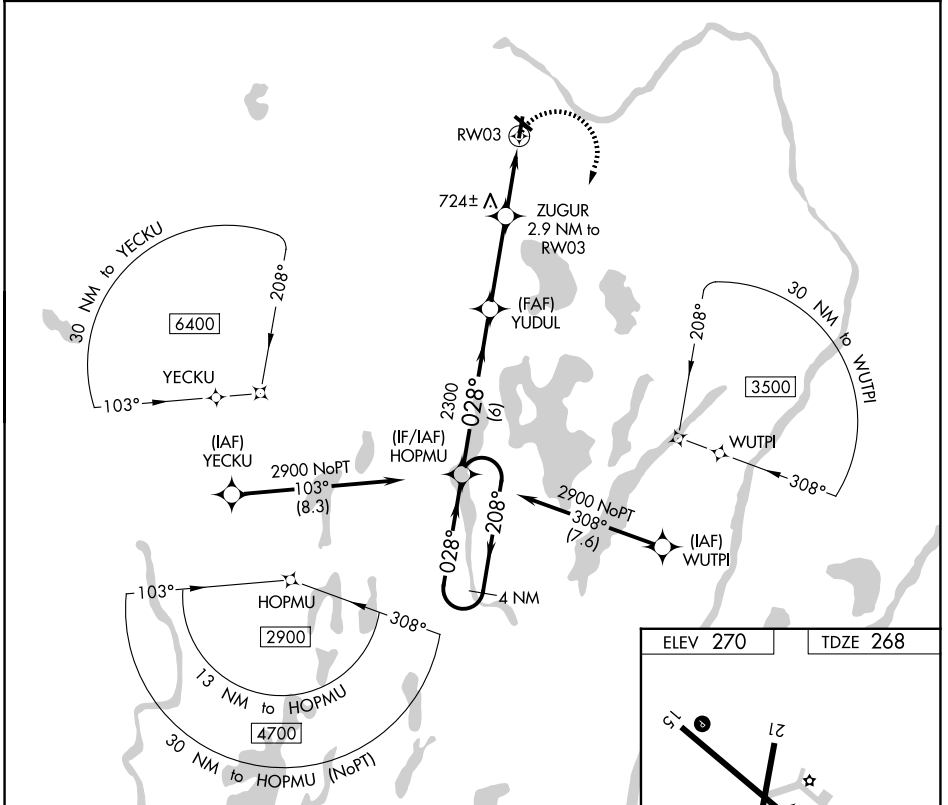
CENTRAL MAINE/NORRIDGEWOCK (OWK)

▼ DME/DME RNP-0.3 NA. When local altimeter setting not received, use Augusta State altimeter setting and increase all MDA 80 feet; increase LNAV Cat B visibility ¼ mile and Cat C visibility ½ mile and Circling Cat B visibility ¼ mile and Cat C visibility ½ mile.

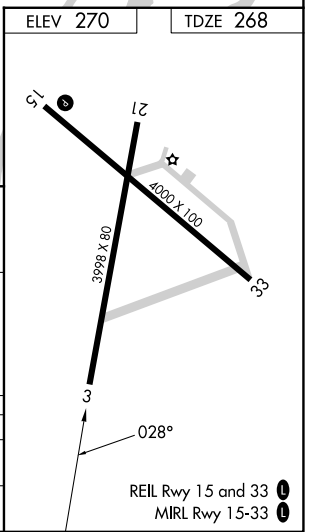
▲ NA Procedure NA at night. Helicopter visibility reduction below 1 SM NA.

MISSED APPROACH: Climbing right turn to 2900 direct HOPMU and hold.

AWOS-AV 123.075	PORTLAND APP CON ★ 128.35 299.2	UNICOM 122.8 (CTAF) 0
---------------------------	---	---------------------------------



4 NM Holding Pattern	Visual Segment - Obstacles.	2900	HOPMU															
← 208° 028° →		6 NM 3.4 NM 2.9 NM																
<table border="1" style="width: 100%;"> <thead> <tr> <th>CATEGORY</th> <th>A</th> <th>B</th> <th>C</th> <th>D</th> </tr> </thead> <tbody> <tr> <td>LNAV MDA</td> <td>980-1</td> <td>712 (800-1)</td> <td>980-2 712 (800-2)</td> <td>NA</td> </tr> <tr> <td>CIRCLING</td> <td>980-1</td> <td>710 (800-1)</td> <td>1080-2¼ 810 (900-2¼)</td> <td>NA</td> </tr> </tbody> </table>	CATEGORY	A	B	C	D	LNAV MDA	980-1	712 (800-1)	980-2 712 (800-2)	NA	CIRCLING	980-1	710 (800-1)	1080-2¼ 810 (900-2¼)	NA			
CATEGORY	A	B	C	D														
LNAV MDA	980-1	712 (800-1)	980-2 712 (800-2)	NA														
CIRCLING	980-1	710 (800-1)	1080-2¼ 810 (900-2¼)	NA														



NE-1, 11 JUN 2026 to 09 JUL 2026

NE-1, 11 JUN 2026 to 09 JUL 2026