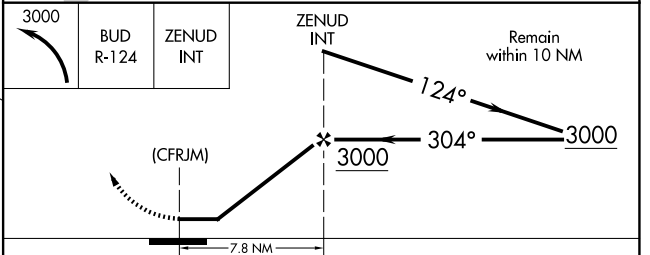
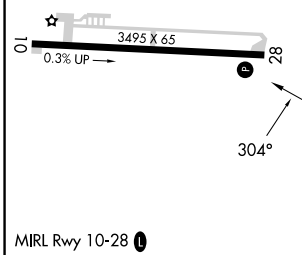
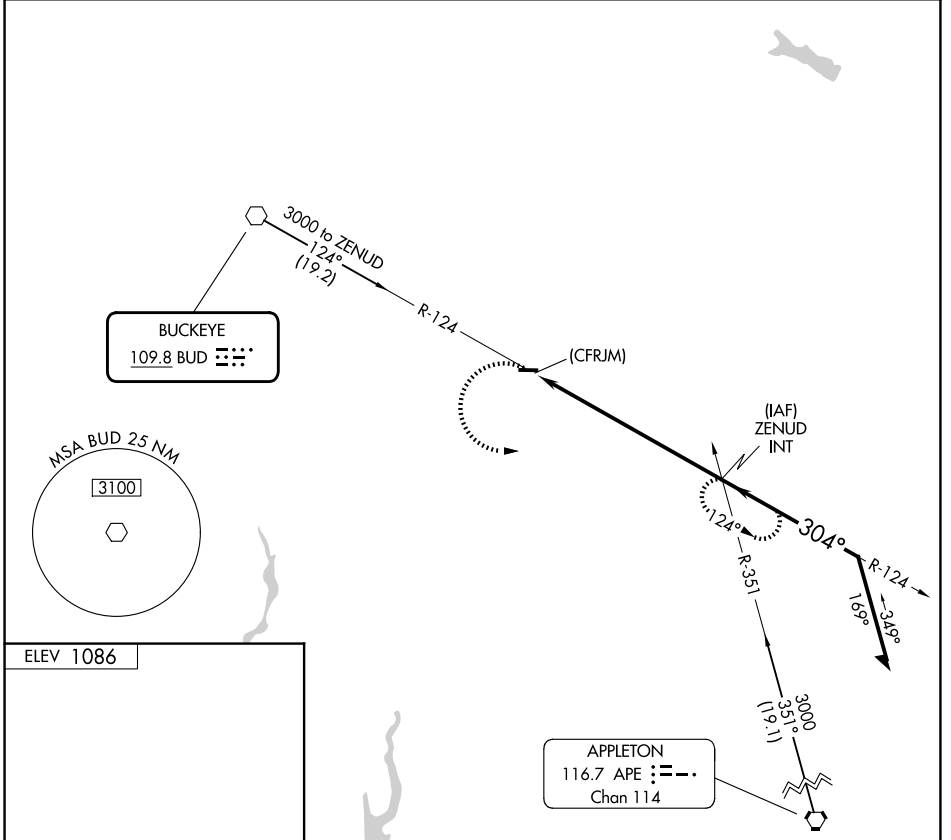


VOR BUD <b>109.8</b>	APP CRS <b>304°</b>	Rwy Ldg TDZE Apt Elev	<b>N/A</b> <b>N/A</b> <b>1086</b>
-------------------------	------------------------	-----------------------------	---

**VOR-A**  
MORROW COUNTY (4I9)

<p><b>▼</b> Circling Rwy 28 NA at night. Rwy 28 helicopter visibility reduction below 1 SM NA. Use Marion altimeter setting, when not received use Mansfield altimeter setting and increase all MDA 60 feet and all visibilities ¼ SM.</p> <p><b>▲</b> NA</p>	<p>MISSED APPROACH: Climbing left turn to 3000 on BUD VOR R-124 to ZENUD INT and hold.</p>
---	--

AWOS-3PT <b>121.4</b>	COLUMBUS APP CON <b>125.95 317.775</b>	UNICOM <b>122.8 (CTAF) 0</b>
--------------------------	---	---------------------------------



FAF to MAP 7.8 NM						
Knots	60	90	120	150	180	
Min:Sec	7:48	5:12	3:54	3:07	2:36	
CATEGORY	A		B		C	D
CIRCLING	1880-1		794 (800-1)		1940-2½ 854 (900-2½)	NA

EC-2, 11 JUN 2026 to 09 JUL 2026

EC-2, 11 JUN 2026 to 09 JUL 2026