

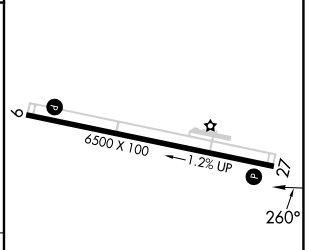
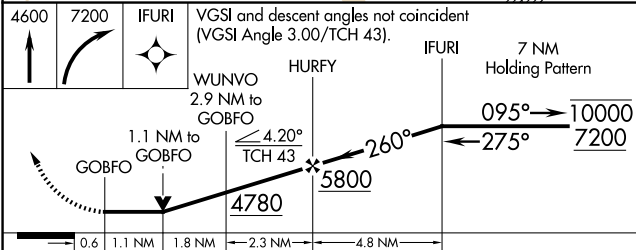
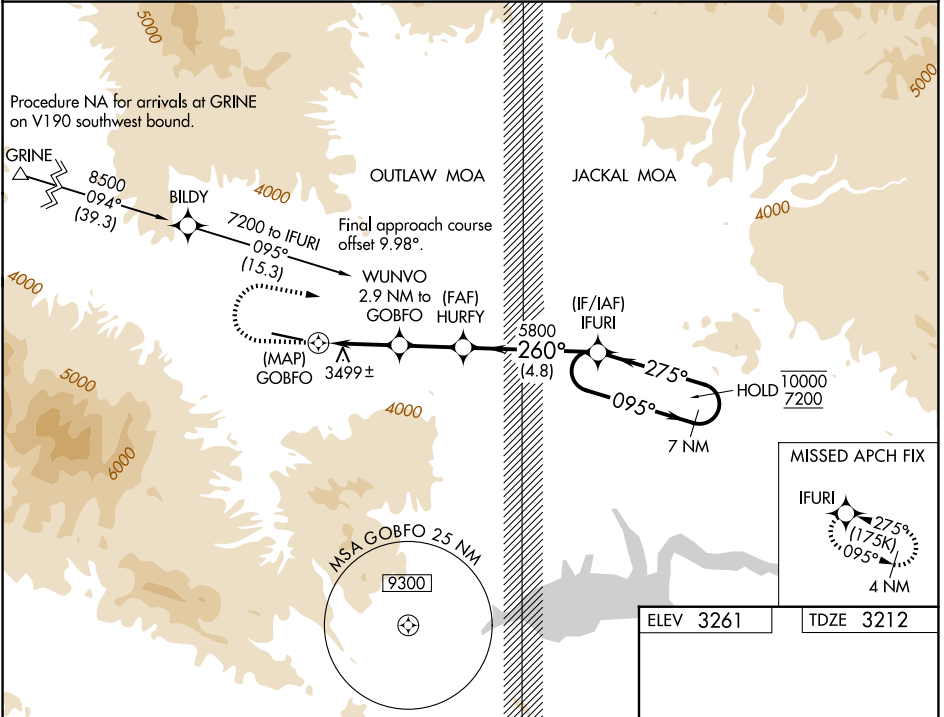
APP CRS	Rwy Ldg	6500
260°	TDZE	3212
	Apt Elev	3261

RNAV (GPS) RWY 27

SAN CARLOS APACHE (P13)

RNP APCH.	MISSED APPROACH: (Do not exceed 175K until IFURI) Climb to 4600 then climbing right turn to 7200 direct IFURI and hold, do not exceed 230K when continuing climb-in-hold to 7200.
<p>▼ Rwy 27 helicopter visibility reduction below ¼ SM NA.</p> <p>▲ NA VDP NA when using San Manuel altimeter setting. When local altimeter setting not received, use San Manuel altimeter setting and increase all MDA 120 feet.</p>	* Missed approach requires minimum climb of 290 feet per NM to 5340.

AWOS-3 120.075	ALBUQUERQUE CENTER 125.4 269.3	UNICOM 122.8 (CTAF) 0
--------------------------	--	---------------------------------



CATEGORY	A	B	C	D
LNAV MDA*	3760-1	548 (500-1)		NA
LNAV MDA	4180-1¼ 968 (1000-1¼)	4180-1½ 968 (1000-1½)		NA
CIRCLING	4180-1¼ 919 (1000-1¼)	4180-1½ 919 (1000-1½)		NA

SW-4, 11 JUN 2026 to 09 JUL 2026

SW-4, 11 JUN 2026 to 09 JUL 2026