

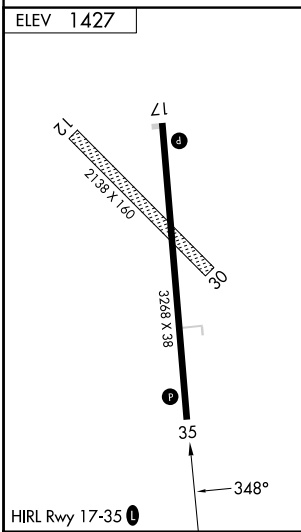
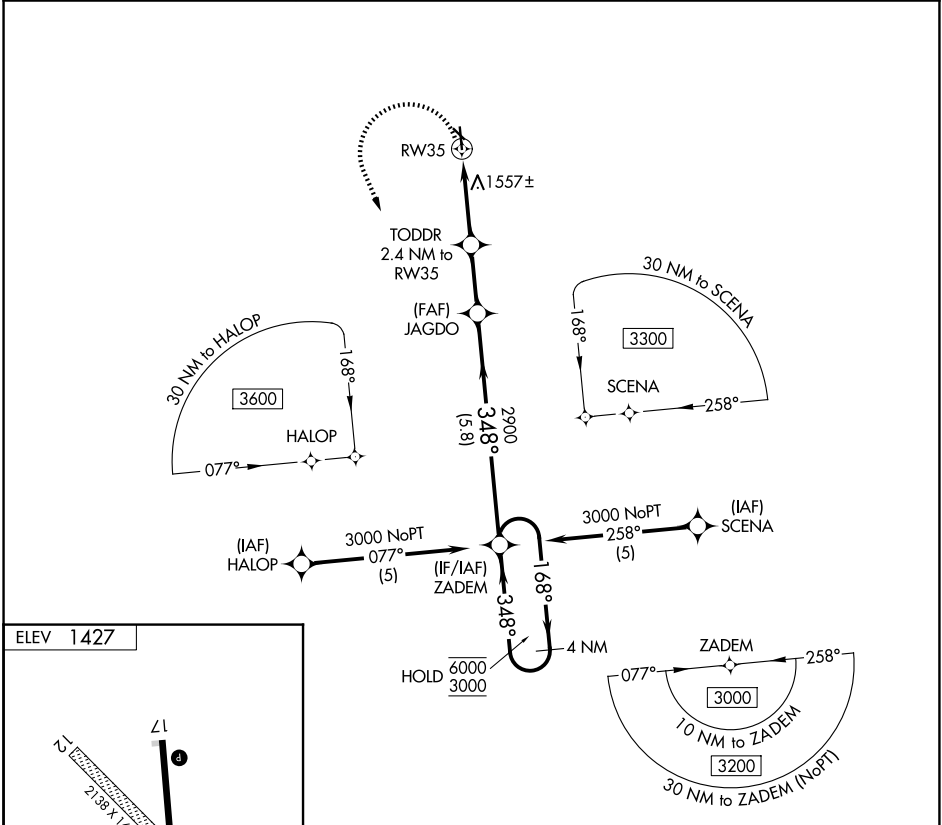
APP CRS	Rwy Ldg	N/A
348°	TDZE	N/A
	Apt Elev	1427

# RNAV (GPS)-A

HARPER MUNI (8K2)

RNP APCH - GPS.		MISSED APPROACH: Climbing left turn to 3000 direct ZADEM and hold.
NA	Procedure NA at night. Circling NA to Rwy 12 and 30. Use ICT altimeter setting; when not received, procedure NA.	

ICT ASOS <b>125.15</b>	WICHITA APP CON <b>126.7 353.5</b>	CTAF <b>122.9</b>
---------------------------	---------------------------------------	----------------------



3000	ZADEM	VGSI and descent angles not coincident (VGSI Angle 3.25/TCH 58).	
		JAGDO	ZADEM
		TODDR 2.4 NM to RW35	4 NM Holding Pattern
		3.25° TCH 40	168° → 6000
		2900	← 348° 3000
		2300	
		2.4 NM	1.7 NM
		5.8 NM	
CATEGORY	A	B	C
CIRCLING	2020-1	593 (600-1)	NA

NC-2, 11 JUN 2026 to 09 JUL 2026

NC-2, 11 JUN 2026 to 09 JUL 2026