

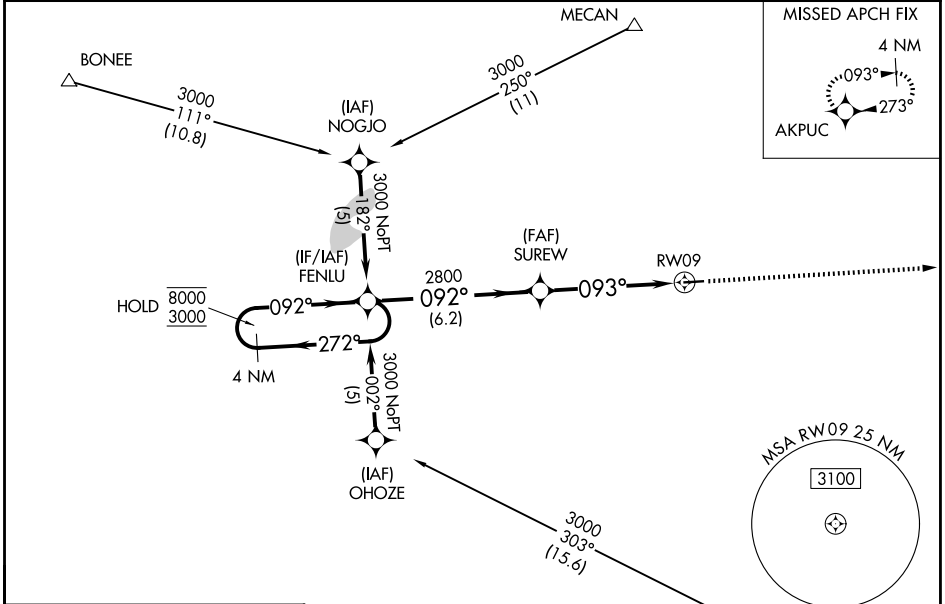
WAAS CH 53409 W09A	APP CRS 093°	Rwy Ldg TDZE Apt Elev	4000 1082 1082
--	------------------------	-----------------------------	---

RNAV (GPS) RWY 9

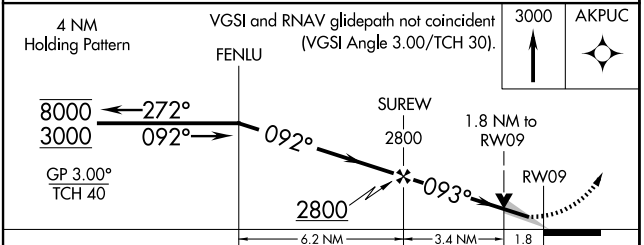
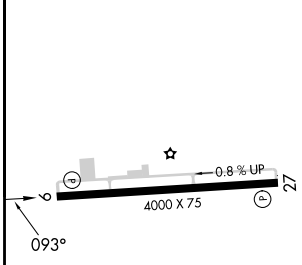
MADISON COUNTY (UYF)

RNP APCH - GPS.		MISSED APPROACH: Climb to 3000 direct AKPUC and hold.
<p>▼ ▲ For uncompensated Baro-VNAV systems, LNAV/VNAV NA below -17°C or above 54°C.</p>		

AWOS-3PT 120.85	COLUMBUS APP CON 134.0 279.6	UNICOM 123.0 (CTAF) 0
---------------------------	--	---------------------------------



ELEV 1082	TDZE 1082
-----------	-----------



4 NM Holding Pattern	VGSi and RNAV glidepath not coincident (VGSi Angle 3.00/TCH 30).			3000	AKPUC
8000 ← 272°	← 092°	092°	2800	1.8 NM to RWY 09	
3000			2800		
GP 3.00°			093°		
TCH 40					
		6.2 NM	3.4 NM	1.8	
CATEGORY	A	B	C	D	
LPV DA		1332-1	250 (300-1)		
LNAV/VNAV DA		1548-1¾ 466 (500-1¾)			
LNAV MDA	1680-1	598 (600-1)	1680-1¾	598 (600-1¾)	
CIRCLING	1680-1	598 (600-1)	1680-1¾	1840-2½	758 (800-2½)

REIL Rwy 9 and 27
MIRL Rwy 9-27

EC-2, 11 JUN 2026 to 09 JUL 2026

EC-2, 11 JUN 2026 to 09 JUL 2026