

APP CRS	Rwy Ldg	<b>2758</b>
<b>071°</b>	TDZE	<b>193</b>
	Apt Elev	<b>193</b>

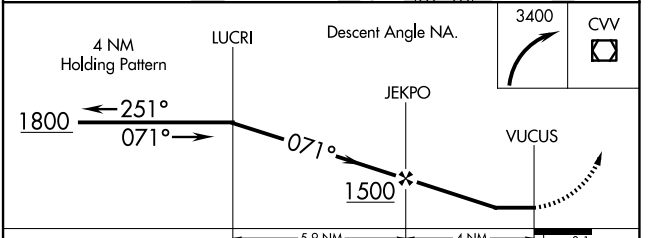
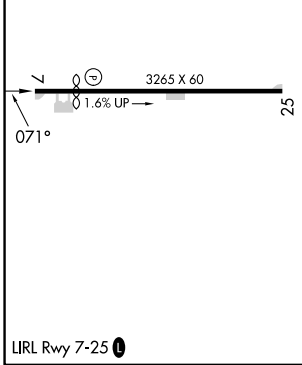
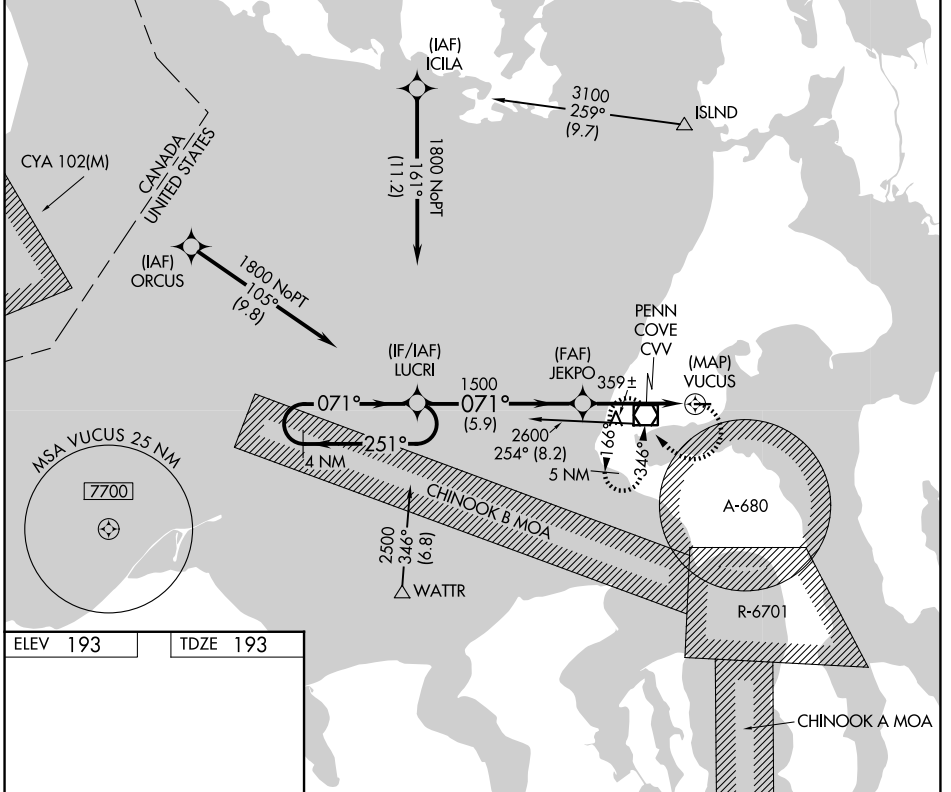
# RNAV (GPS) RWY 7

DELAURENTIS (OKH)

**▼** DME/DME RNP- 0.3 NA. Helicopter visibility reduction below 3/4 SM NA. Circling north of Rwy 7-25 NA at night.  
**▲** When local altimeter setting not received, use Whidbey Island NAS (Ault Flt) altimeter setting and increase all MDAs 40 feet. Night landing: Rwy 25 NA.

MISSED APPROACH: Climbing right turn to 3400 direct CVV VOR/DME and hold, continue climb-in-hold to 3400.

AWOS-3 <b>132.775</b>	WHIDBEY APP CON <b>118.2 285.65</b>	UNICOM <b>122.8 (CTAF) 0</b>
--------------------------	--	---------------------------------



CATEGORY	A	B	C	D
LNNAV MDA	620-1	427 (500-1)	NA	
CIRCLING	620-1	660-1	NA	
	427 (500-1)	467 (500-1)		

NW-1, 11 JUN 2026 to 09 JUL 2026

NW-1, 11 JUN 2026 to 09 JUL 2026