

WAAS CH 50431 W07A	APP CRS 067°	Rwy Ldg TDZE Apt Elev	4500 692 692
--	------------------------	-----------------------------	---

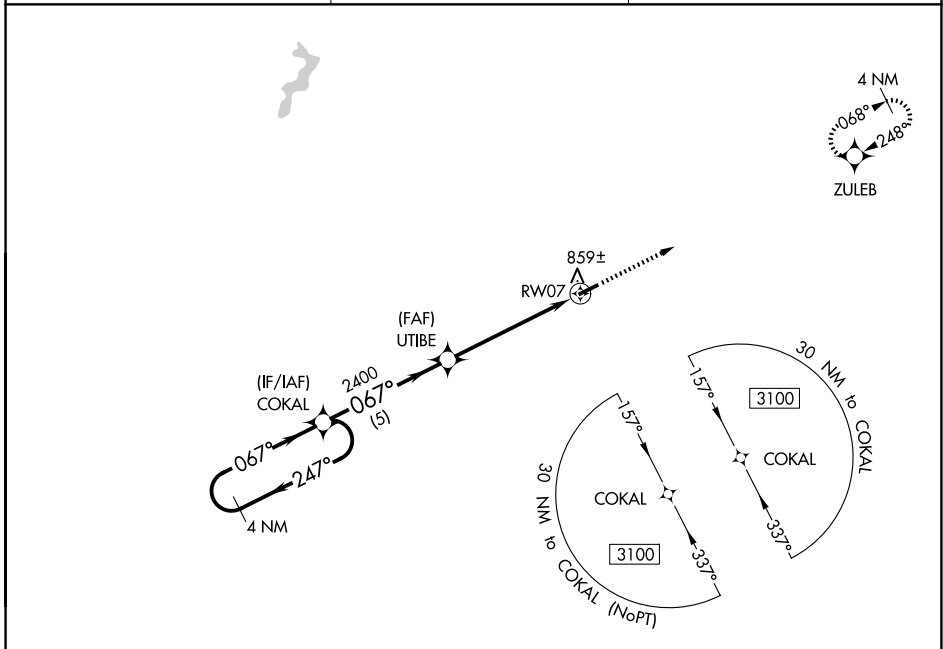
RNAV (GPS) RWY 7

RUSSELLVILLE-LOGAN COUNTY (4M7)

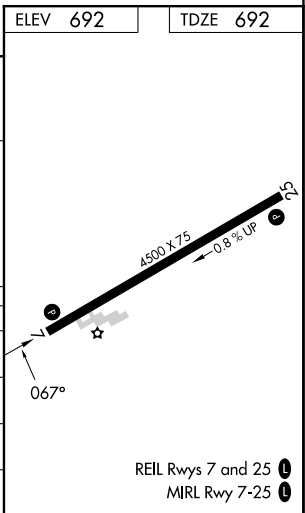
NA Baro-VNAV NA. DME/DME RNP-0.3 NA. Use Springfield altimeter setting. Circling Rwy 25 NA at night.

MISSED APPROACH: Climb to 3100 direct ZULEB and hold.

M91 AWOS-3 120.675	MEMPHIS CENTER 133.85 285.5	UNICOM 122.7 (CTAF) 0
------------------------------	---------------------------------------	---------------------------------



4 NM Holding Pattern		COKAL		UTIBE		RWY 07	
3100		2400		2400		859±	
←247°		→067°		→067°		→067°	
GP 3.00°		5 NM		5.2 NM		4500 X 75	
TCH 40						←0.8% UP	
CATEGORY	A	B	C	D			
LPV DA	982-1		290 (300-1)				
LNAV/VNAV DA	1060-1¼		368 (400-1¼)				
LNAV MDA	1160-1	468 (500-1)		1160-1¾	468 (500-1¾)		
CIRCLING	1320-1	628 (700-1)		1320-1¾	1520-2¾		
				628 (700-1¾)	828 (900-2¾)		



SE-1, 11 JUN 2026 to 09 JUL 2026

SE-1, 11 JUN 2026 to 09 JUL 2026