

RNAV (GPS) RWY 10

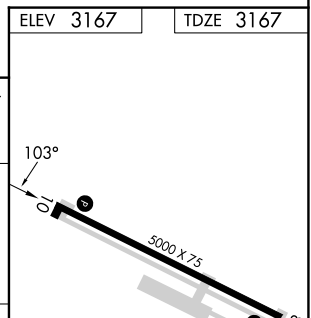
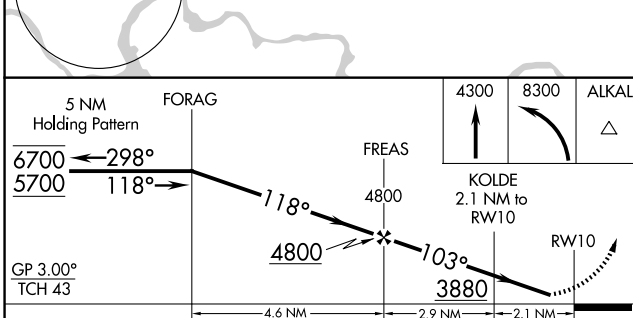
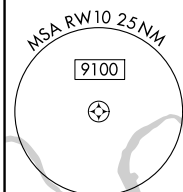
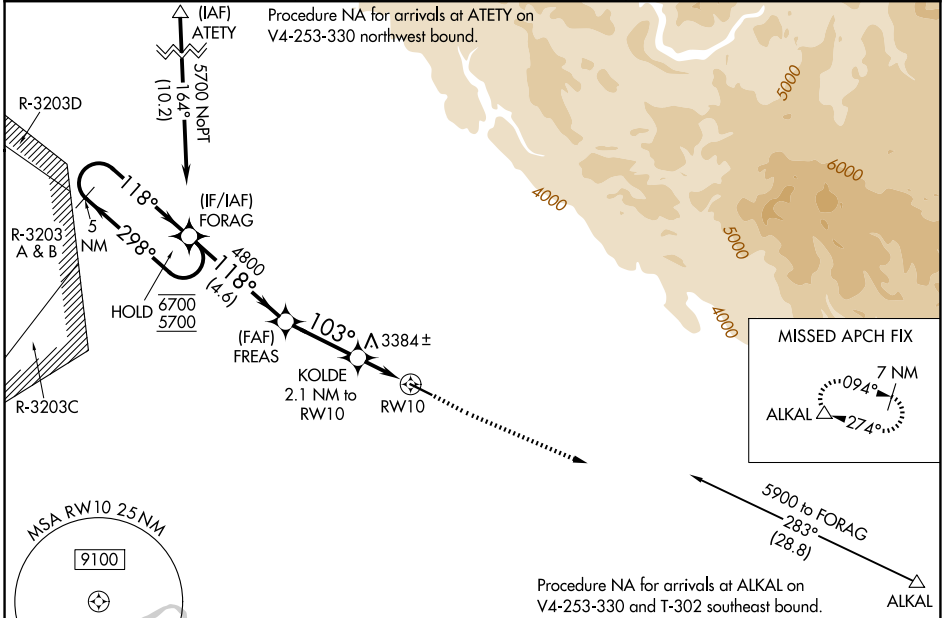
MOUNTAIN HOME MUNI (U76)

WAAS CH 90344 W10A	APP CRS 103°	Rwy Ldg TDZE Apt Elev	5000 3167 3167
--	------------------------	-----------------------------	---

RNP APCH-GPS.
 ▼ Rwy 10 helicopter visibility reduction below 3/4 SM NA.
 ▲ NA Baro-VNAV NA. Hold-in-lieu NA when R-3203A/B/C/D is active. Use Mountain Home AFB altimeter setting.

MISSED APPROACH: Climb to 4300 then climbing left turn to 8300 direct ALKAL and hold, continue climb-in-hold to 8300.

KMUO ATIS 273.5	MOUNTAIN HOME APP CON * 124.8 259.1	AUNICOM 122.8 (CTAF) 0
---------------------------	---	----------------------------------



CATEGORY	A	B	C	D
LPV DA		3460-7/8	293 (300-7/8)	
LNAV/VNAV DA		3604-1/4	437 (500-1/4)	
LNAV MDA	3680-1	513 (600-1)	3680-1 3/8	513 (600-1 3/8)
CIRCLING	3680-1 513 (600-1)	3780-1 613 (700-1)	3780-1 3/4 613 (700-3/4)	4180-3 1013 (1100-3)

ELEV 3167 TDZE 3167
 REIL Rwy 10 and 28 0
 MRL Rwy 10-28 0

NW-1, 11 JUN 2026 to 09 JUL 2026

NW-1, 11 JUN 2026 to 09 JUL 2026